

For Research Use Only

LIPC Recombinant monoclonal antibody

Catalog Number: 87243-1-RR



Basic Information

Catalog Number: 87243-1-RR	GenBank Accession Number: BC146659	Purification Method: Protein A purification
Source: Rabbit	GeneID (NCBI): 3990	CloneNo.: 251015D5
Isotype: IgG	UNIPROT ID: P11150	Recommended Dilutions: WB: 1:1000-1:4000
Immunogen Catalog Number: AG15538	Full Name: lipase, hepatic	
	Calculated MW: 499 aa, 56 kDa	
	Observed MW: 65 kDa	

Applications

Tested Applications: WB, ELISA	Positive Controls: WB : mouse liver tissue, HepG2 cells, HuH-7 cells, rat liver tissue, mouse heart tissue
Species Specificity: human, mouse, rat	

Background Information

LIPC, also named as HTGL and HL, belongs to the AB hydrolase superfamily and Lipase family. It has the capacity to catalyze hydrolysis of phospholipids, mono-, di-, and triglycerides, and acyl-CoA thioesters. LIPC is an important enzyme in HDL metabolism. It binds heparin.

Storage

Storage:
Store at -20°C. Stable for one year after shipment.
Storage Buffer:
PBS with 0.02% sodium azide and 50% glycerol, pH7.3
Aliquoting is unnecessary for -20°C storage

For technical support and original validation data for this product please contact:

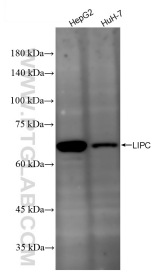
T: 4006900926

E: Proteintech-CN@ptglab.com

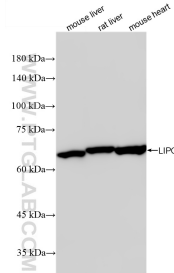
W: ptgcn.com

This product is exclusively available under Proteintech Group brand and is not available to purchase from any other manufacturer.

Selected Validation Data



Various lysates were subjected to SDS PAGE followed by western blot with 87243-1-RR (LIPC antibody) at dilution of 1:2000 incubated at room temperature for 1.5 hours.



Various lysates were subjected to SDS PAGE followed by western blot with 87243-1-RR (LIPC antibody) at dilution of 1:2000 incubated at room temperature for 1.5 hours.