

For Research Use Only

Mouse Leptin Recombinant monoclonal antibody, PBS Only (Detector)

Catalog Number:87242-3-PBS



Basic Information

Catalog Number:

87242-3-PBS

Source:

Rabbit

Isotype:

IgG

Immunogen Catalog Number:

EG4486

GenBank Accession Number:

NM_008493.3

GeneID (NCBI):

16846

UNIPROT ID:

Q544U0

Full Name:

leptin

Calculated MW:

19KD

Purification Method:

Protein A purification

CloneNo.:

251280B7

Applications

Tested Applications:

Sandwich ELISA, Indirect ELISA

Species Specificity:

mouse

Background Information

Storage

Storage:

Store at -80°C.

The product is shipped with ice packs. Upon receipt, store it immediately at -80°C

Storage Buffer:

PBS only, pH7.3

For technical support and original validation data for this product please contact:

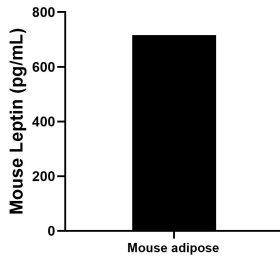
T: 4006900926

E: Proteintech-CN@ptglab.com

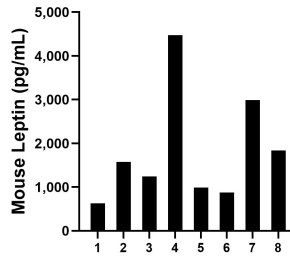
W: ptgcn.com

This product is exclusively available under Proteintech Group brand and is not available to purchase from any other manufacturer.

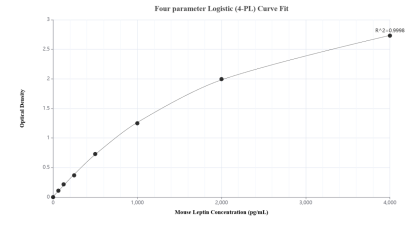
Selected Validation Data



The mean Leptin concentration was determined to be 716.3 pg/mL in mouse adipose tissue extract based on a 1.8 mg/mL extract load.



Serum of eight mice was measured. The Leptin concentration of detected samples was determined to be 1,826.5 pg/mL with a range of 626.4-4,475.5 pg/mL.



Sandwich ELISA standard curve of MP02927-2, Mouse Leptin Recombinant Matched Antibody Pair - PBS only. 87242-2-PBS was coated to a plate as the capture antibody and incubated with serial dilutions of standard Eg4486. 87242-3-PBS was HRP conjugated as the detection antibody. Range: 62.5-4000 pg/mL.