

For Research Use Only

# Mouse Leptin Recombinant monoclonal antibody, PBS Only (Capture)

Catalog Number: 87242-2-PBS



## Basic Information

<b>Catalog Number:</b> 87242-2-PBS	<b>GenBank Accession Number:</b> NM_008493.3	<b>Purification Method:</b> Protein A purification
<b>Source:</b> Rabbit	<b>GeneID (NCBI):</b> 16846	<b>CloneNo.:</b> 251280G8
<b>Isotype:</b> IgG	<b>UNIPROT ID:</b> Q544U0	
<b>Immunogen Catalog Number:</b> EG4486	<b>Full Name:</b> leptin	
	<b>Calculated MW:</b> 19KD	

## Applications

**Tested Applications:**  
IF/ICC, Cytometric bead array, Sandwich ELISA, Indirect ELISA

**Species Specificity:**  
mouse

## Background Information

### Storage

**Storage:**  
Store at -80°C.  
**The product is shipped with ice packs. Upon receipt, store it immediately at -80°C**

**Storage Buffer:**  
PBS only, pH7.3

For technical support and original validation data for this product please contact:

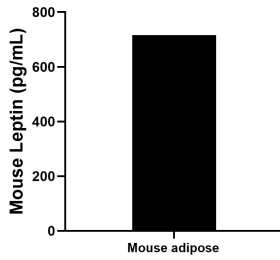
T: 4006900926

E: [Proteintech-CN@ptglab.com](mailto:Proteintech-CN@ptglab.com)

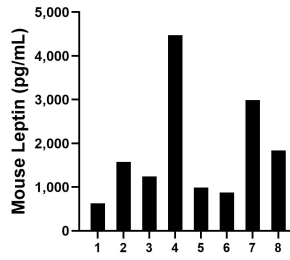
W: [ptgcn.com](http://ptgcn.com)

**This product is exclusively available under Proteintech Group brand and is not available to purchase from any other manufacturer.**

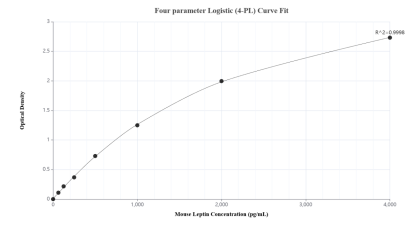
## Selected Validation Data



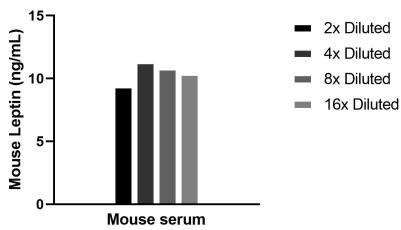
The mean Leptin concentration was determined to be 716.3 pg/mL in mouse adipose tissue extract based on a 1.8 mg/mL extract load.



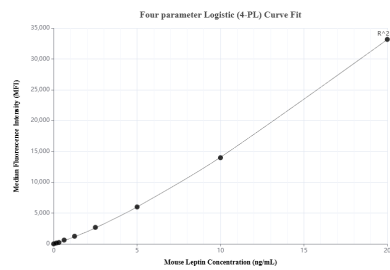
Serum of eight mice was measured. The Leptin concentration of detected samples was determined to be 1,826.5 pg/mL with a range of 626.4-4,475.5 pg/mL.



Sandwich ELISA standard curve of MP02927-2, Mouse Leptin Recombinant Matched Antibody Pair - PBS only. 87242-2-PBS was coated to a plate as the capture antibody and incubated with serial dilutions of standard Eg4486. 87242-3-PBS was HRP conjugated as the detection antibody. Range: 62.5-4000 pg/mL.



The mean Leptin concentration was determined to be 10.3 ng/mL in mouse serum.



Cytometric bead array standard curve of MP02927-1, MOUSE Leptin Recombinant Matched Antibody Pair, PBS Only. Capture antibody: 87242-2-PBS. Detection antibody: 87242-1-PBS. Standard: Eg4486. Range: 0.156-20 ng/mL.