

For Research Use Only

Mouse Leptin Recombinant monoclonal antibody, PBS Only (Detector)

Catalog Number:87242-1-PBS



Basic Information

Catalog Number: 87242-1-PBS	GenBank Accession Number: NM_008493.3	Purification Method: Protein A purification
Source: Rabbit	GeneID (NCBI): 16846	CloneNo.: 251280G1
Isotype: IgG	UNIPROT ID: Q544U0	
Immunogen Catalog Number: EG4486	Full Name: leptin	
	Calculated MW: 19KD	

Applications

Tested Applications:
Cytometric bead array, Indirect ELISA

Species Specificity:
mouse

Background Information

Storage

Storage:
Store at -80°C.
The product is shipped with ice packs. Upon receipt, store it immediately at -80°C

Storage Buffer:
PBS only, pH7.3

For technical support and original validation data for this product please contact:

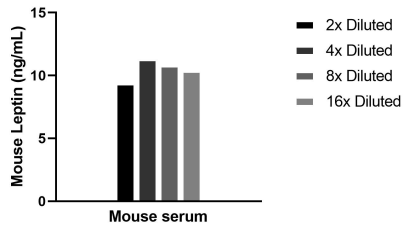
T: 4006900926

E: Proteintech-CN@ptglab.com

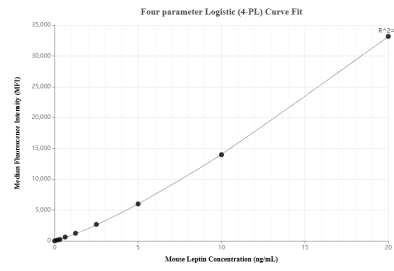
W: ptgcn.com

This product is exclusively available under Proteintech Group brand and is not available to purchase from any other manufacturer.

Selected Validation Data



The mean Leptin concentration was determined to be 10.3 ng/mL in mouse serum.



Cytometric bead array standard curve of MP02927-1, MOUSE Leptin Recombinant Matched Antibody Pair, PBS Only. Capture antibody: 87242-2-PBS. Detection antibody: 87242-1-PBS. Standard: Eg4486. Range: 0.156-20 ng/mL.