

For Research Use Only

MUL1 Recombinant monoclonal antibody

Catalog Number: 87235-1-RR



Basic Information

Catalog Number: 87235-1-RR	GenBank Accession Number: BC010101	Purification Method: Protein A purification
Source: Rabbit	GeneID (NCBI): 79594	CloneNo.: 252482F6
Isotype: IgG	UNIPROT ID: Q969V5	Recommended Dilutions: WB: 1:2000-1:10000
Immunogen Catalog Number: AG9119	Full Name: mitochondrial E3 ubiquitin ligase 1	
	Calculated MW: 352 aa, 40 kDa	
	Observed MW: 35-41 kDa	

Applications

Tested Applications: WB, ELISA	Positive Controls: WB : HeLa cells, RAW 264.7 cells, SH-SY5Y cells, J774A.1 cells, PC-12 cells
Species Specificity: human, mouse, rat	

Background Information

Mitochondrial ubiquitin ligase 1 (MUL1), MAPL, MULAN, or gGIDE, was identified as an E3 protein ligase by three independent groups. Work in mammalian systems shows that MUL1 has small ubiquitin-like modifier (SUMO) ligase activity, stabilizing Drp1, or ubiquitin ligase activity, degrading Mfn. MUL1 expression in mammalian cells results in smaller and more fragmented mitochondria.

Storage

Storage:
Store at -20°C. Stable for one year after shipment.
Storage Buffer:
PBS with 0.02% sodium azide and 50% glycerol, pH7.3
Aliquoting is unnecessary for -20°C storage

For technical support and original validation data for this product please contact:

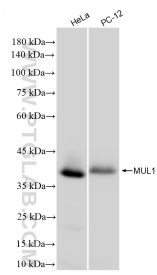
T: 4006900926

E: Proteintech-CN@ptglab.com

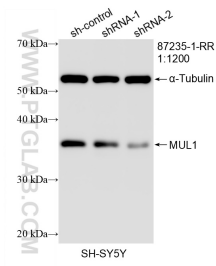
W: ptgcn.com

This product is exclusively available under Proteintech Group brand and is not available to purchase from any other manufacturer.

Selected Validation Data



Various lysates were subjected to SDS PAGE followed by western blot with 87235-1-RR (MUL1 antibody) at dilution of 1:5000 incubated at room temperature for 1.5 hours.



WB result of MUL1 antibody (87235-1-RR; 1:1200; incubated at room temperature for 1.5 hours) with sh-Control and sh-MUL1 transfected SH-SY5Y cells.