

For Research Use Only

# SLC6A20 Recombinant monoclonal antibody

Catalog Number:87227-1-RR



## Basic Information

<b>Catalog Number:</b> 87227-1-RR	<b>GenBank Accession Number:</b> BC136431	<b>Purification Method:</b> Protein A purification
<b>Source:</b> Rabbit	<b>GeneID (NCBI):</b> 54716	<b>CloneNo.:</b> 252429A8
<b>Isotype:</b> IgG	<b>UNIPROT ID:</b> Q9NP91	<b>Recommended Dilutions:</b> WB: 1:2000-1:10000
<b>Immunogen Catalog Number:</b> AG33967	<b>Full Name:</b> solute carrier family 6 (proline IMINO transporter), member 20	
	<b>Observed MW:</b> 65 kDa	

## Applications

<b>Tested Applications:</b> WB, ELISA	<b>Positive Controls:</b> WB : HEK-293 cells,
<b>Species Specificity:</b> human	

## Background Information

SLC6A20 also known as XT3, SIT1, belongs to the family of solute carrier 6, mediating the transport of neutral amino acids from the extracellular milieu toward cell or storage vesicles utilizing an electric membrane potential as the driving force. SLC6A20 is expressed in the kidney and small intestine and is localized in the brush marginal membrane of the proximal renal tubules (PMID: 16174864). Mutations in SLC6A20 are associated with Hyperglycinuria and Iminoglycinuria (PMID: 19033659)

## Storage

**Storage:**  
Store at -20°C. Stable for one year after shipment.  
**Storage Buffer:**  
PBS with 0.02% sodium azide and 50% glycerol, pH7.3  
Aliquoting is unnecessary for -20°C storage

For technical support and original validation data for this product please contact:

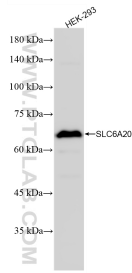
T: 4006900926

E: Proteintech-CN@ptglab.com

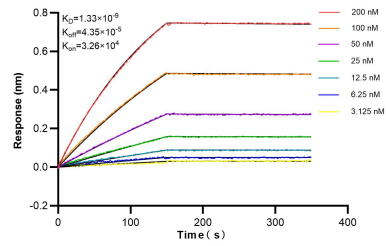
W: ptgcn.com

This product is exclusively available under Proteintech Group brand and is not available to purchase from any other manufacturer.

## Selected Validation Data



HEK-293 cells were subjected to SDS PAGE followed by western blot with 87227-1-RR (SLC6A20 antibody) at dilution of 1:5000 incubated at room temperature for 1.5 hours.



Biolayer interferometry (BLI) kinetic assays of 87227-1-RR against Human SLC6A20 were performed. The affinity constant is 1.33 nM.