

For Research Use Only

# STAT5B Recombinant monoclonal antibody, PBS Only (Capture)

Catalog Number: 87224-2-PBS



## Basic Information

Catalog Number:

87224-2-PBS

Source:

Rabbit

Isotype:

IgG

GenBank Accession Number:

BC065227

GeneID (NCBI):

6777

ENSEMBL Gene ID:

ENSG00000173757

UNIPROT ID:

P51692

Full Name:

signal transducer and activator of transcription 5B

Calculated MW:

90 kDa

Observed MW:

90 kDa

Purification Method:

Protein A purification

CloneNo.:

252436G2

## Applications

Tested Applications:

WB, IF/ICC, Cytometric bead array, Indirect ELISA

Species Specificity:

human, mouse, rat

## Background Information

STAT5B belongs to the transcription factor STAT family. In response to cytokines and growth factors, STAT family members are phosphorylated by the receptor associated kinases, and then form homo- or heterodimers that translocate to the cell nucleus where they act as transcription activators. STAT5B carries out a dual function: signal transduction and activation of transcription. STAT5B mediates the signal transduction triggered by various cell ligands, such as IL2, IL4, CSF1, and different growth hormones. It has been shown to be involved in diverse biological processes, such as TCR signaling, apoptosis, adult mammary gland development, and sexual dimorphism of liver gene expression.

## Storage

Storage:

Store at -80°C.

**The product is shipped with ice packs. Upon receipt, store it immediately at -80°C**

Storage Buffer:

PBS only, pH7.3

For technical support and original validation data for this product please contact:

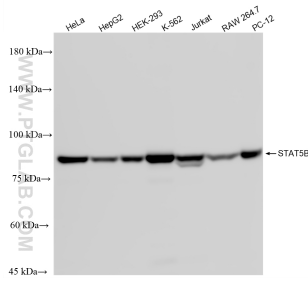
T: 4006900926

E: [Proteintech-CN@ptglab.com](mailto:Proteintech-CN@ptglab.com)

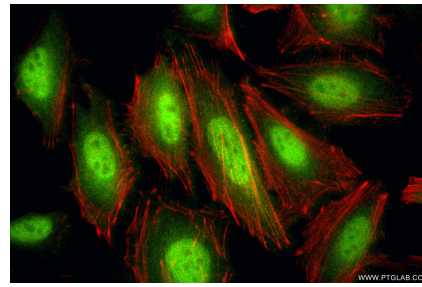
W: [ptgcn.com](http://ptgcn.com)

**This product is exclusively available under Proteintech Group brand and is not available to purchase from any other manufacturer.**

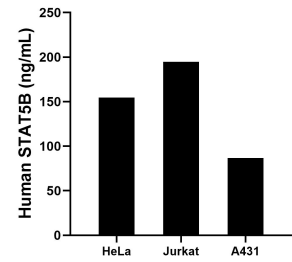
## Selected Validation Data



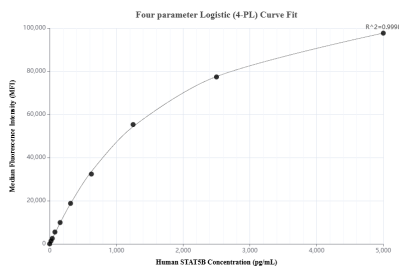
Various lysates were subjected to SDS PAGE followed by western blot with 87224-2-RR (STAT5B antibody) at dilution of 1:10000 incubated at room temperature for 1.5 hours. This data was developed using the same antibody clone with 87224-2-PBS in a different storage buffer formulation.



Immunofluorescent analysis of (4% PFA) fixed HeLa cells using STAT5B antibody (87224-2-RR, Clone: 252436G2 ) at dilution of 1:400 and Coralite® 488-Conjugated Goat Anti-Rabbit IgG(H+L) (SA00013-2), CL594-Phalloidin (red). This data was developed using the same antibody clone with 87224-2-PBS in a different storage buffer formulation.



The mean STAT5B concentration was determined to be 154.7 ng/mL in HeLa cell extract based on a 1.2 mg/mL extract load, 194.7 ng/mL in Jurkat cell extract based on a 1.2 mg/mL extract load, 86.8 ng/mL in A431 cell extract based on a 1.2 mg/mL extract load.



Cytometric bead array standard curve of MP02926-1, STAT5B Recombinant Matched Antibody Pair, PBS Only. Capture antibody: 87224-2-PBS. Detection antibody: 87224-1-PBS. Standard: 1928-46/80. Range: 19.53-5000 pg/mL.