

For Research Use Only

CDC45L Recombinant monoclonal antibody, PBS Only

Catalog Number:87219-1-PBS



Basic Information

Catalog Number:

87219-1-PBS

Source:

Rabbit

Isotype:

IgG

Immunogen Catalog Number:

AG8150

GenBank Accession Number:

BC010022

GeneID (NCBI):

8318

UNIPROT ID:

O75419

Full Name:

CDC45 cell division cycle 45-like (S. cerevisiae)

Calculated MW:

64 kDa

Observed MW:

66 kDa

Purification Method:

Protein A purification

CloneNo.:

252457D11

Applications

Tested Applications:

WB, Indirect ELISA

Species Specificity:

human, rat

Background Information

CDC45L(Cell division control protein 45 homolog), plays a role in the initiation of DNA replication, and genetically interacts with MCM family members and with ORC2 and physically form a complex including Mcm5p. It's the first gene missed in DiGeorge syndrome that suggest involve in cell proliferation.

Storage

Storage:

Store at -80°C.

The product is shipped with ice packs. Upon receipt, store it immediately at -80°C

Storage Buffer:

PBS only, pH7.3

For technical support and original validation data for this product please contact:

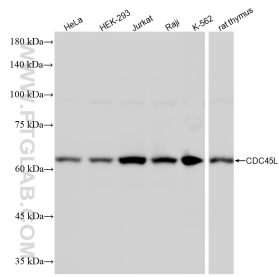
T: 4006900926

E: Proteintech-CN@ptglab.com

W: ptgcn.com

This product is exclusively available under Proteintech Group brand and is not available to purchase from any other manufacturer.

Selected Validation Data



Various lysates were subjected to SDS PAGE followed by western blot with 87219-1-RR (CDC45L antibody) at dilution of 1:2000 incubated at room temperature for 1.5 hours. This data was developed using the same antibody clone with 87219-1-PBS in a different storage buffer formulation.