

For Research Use Only

# MCM8 Recombinant monoclonal antibody

Catalog Number: 87212-1-RR



## Basic Information

<b>Catalog Number:</b> 87212-1-RR	<b>GenBank Accession Number:</b> BC008830	<b>Purification Method:</b> Protein A purification
<b>Source:</b> Rabbit	<b>GeneID (NCBI):</b> 84515	<b>CloneNo.:</b> 252460F9
<b>Isotype:</b> IgG	<b>UNIPROT ID:</b> Q9UJA3	<b>Recommended Dilutions:</b> WB: 1:20000-1:100000 IF/ICC: 1:400-1:1600
<b>Immunogen Catalog Number:</b> AG8430	<b>Full Name:</b> minichromosome maintenance complex component 8	
	<b>Calculated MW:</b> 880 aa, 98 kDa	
	<b>Observed MW:</b> 90-95 kDa	

## Applications

<b>Tested Applications:</b> WB, IF/ICC, ELISA	<b>Positive Controls:</b>
<b>Species Specificity:</b> human, mouse, rat	<b>WB :</b> HCT 116 cells, NIH/3T3 cells, SW 480 cells, U2OS cells, HEK-293T cells, RAW 264.7 cells, HSC-T6 cells <b>IF/ICC :</b> NIH/3T3 cells,

## Background Information

MCM8, also named as Minichromosome maintenance 8, is a 840 amino acid protein, which belongs to the MCM family. MCM8 is expressed highly in placenta, lung and pancreas and various tumors with highest levels in colon and lung cancers. MCM8 is a component of the MCM8-MCM9 complex, which involved in homologous recombination repair following DNA interstrand cross-links and plays a key role during gametogenesis.

## Storage

**Storage:**  
Store at -20°C. Stable for one year after shipment.  
**Storage Buffer:**  
PBS with 0.02% sodium azide and 50% glycerol, pH7.3  
Aliquoting is unnecessary for -20°C storage

For technical support and original validation data for this product please contact:

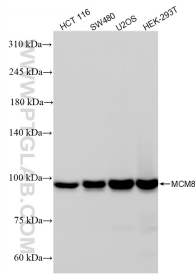
T: 4006900926

E: [Proteintech-CN@ptglab.com](mailto:Proteintech-CN@ptglab.com)

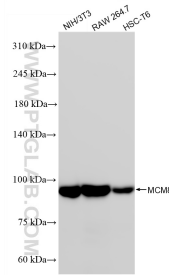
W: [ptgcn.com](http://ptgcn.com)

This product is exclusively available under Proteintech Group brand and is not available to purchase from any other manufacturer.

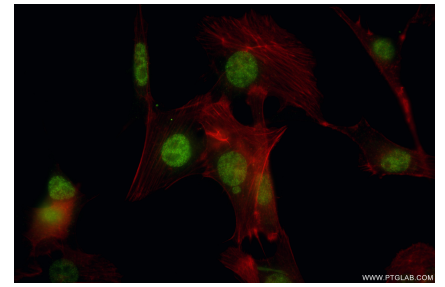
## Selected Validation Data



Various lysates were subjected to SDS PAGE followed by western blot with 87212-1-RR (MCM8 antibody) at dilution of 1:100000 incubated at room temperature for 1.5 hours.



Various lysates were subjected to SDS PAGE followed by western blot with 87212-1-RR (MCM8 antibody) at dilution of 1:100000 incubated at room temperature for 1.5 hours.



Immunofluorescent analysis of (4% PFA) fixed NIH/3T3 cells using MCM8 antibody (87212-1-RR, Clone: 252460F9) at dilution of 1:800 and CoraLite® 488-Conjugated Goat Anti-Rabbit IgG(H+L) (SA00013-2), CL594-Phalloidin (red).