

For Research Use Only

# MCM8 Recombinant monoclonal antibody, PBS Only

Catalog Number: 87212-1-PBS



## Basic Information

Catalog Number:

87212-1-PBS

Source:

Rabbit

Isotype:

IgG

Immunogen Catalog Number:

AG8430

GenBank Accession Number:

BC008830

GeneID (NCBI):

84515

UNIPROT ID:

Q9UJA3

Full Name:

minichromosome maintenance complex component 8

Calculated MW:

880 aa, 98 kDa

Observed MW:

90-95 kDa

Purification Method:

Protein A purification

CloneNo.:

252460F9

## Applications

Tested Applications:

WB, IF/ICC, Indirect ELISA

Species Specificity:

human, mouse, rat

## Background Information

MCM8, also named as Minichromosome maintenance 8, is a 840 amino acid protein, which belongs to the MCM family. MCM8 is expressed highly in placenta, lung and pancreas and various tumors with highest levels in colon and lung cancers. MCM8 is a component of the MCM8-MCM9 complex, which involved in homologous recombination repair following DNA interstrand cross-links and plays a key role during gametogenesis.

## Storage

Storage:

Store at -80°C.

**The product is shipped with ice packs. Upon receipt, store it immediately at -80°C**

Storage Buffer:

PBS only, pH7.3

For technical support and original validation data for this product please contact:

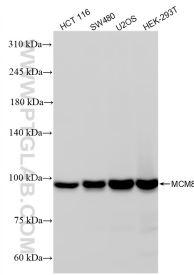
T: 4006900926

E: [Proteintech-CN@ptglab.com](mailto:Proteintech-CN@ptglab.com)

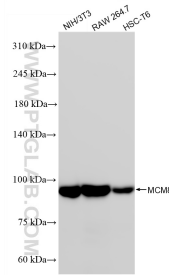
W: [ptgcn.com](http://ptgcn.com)

**This product is exclusively available under Proteintech Group brand and is not available to purchase from any other manufacturer.**

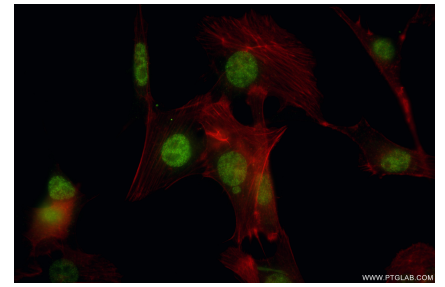
## Selected Validation Data



Various lysates were subjected to SDS PAGE followed by western blot with 87212-1-RR (MCM8 antibody) at dilution of 1:100000 incubated at room temperature for 1.5 hours. This data was developed using the same antibody clone with 87212-1-PBS in a different storage buffer formulation.



Various lysates were subjected to SDS PAGE followed by western blot with 87212-1-RR (MCM8 antibody) at dilution of 1:100000 incubated at room temperature for 1.5 hours. This data was developed using the same antibody clone with 87212-1-PBS in a different storage buffer formulation.



Immunofluorescent analysis of (4% PFA) fixed NIH/3T3 cells using MCM8 antibody (87212-1-RR, Clone: 252460F9) at dilution of 1:800 and CoraLite®488-Conjugated Goat Anti-Rabbit IgG(H+L) (SA00013-2), CL594-Phalloidin (red). This data was developed using the same antibody clone with 87212-1-PBS in a different storage buffer formulation.