

For Research Use Only

# Phospho-RB1 (Ser608) Recombinant monoclonal antibody

Catalog Number: 87211-3-RR



## Basic Information

Catalog Number:

87211-3-RR

Source:

Rabbit

Isotype:

IgG

GenBank Accession Number:

BC039060

GeneID (NCBI):

5925

UNIPROT ID:

P06400

Full Name:

retinoblastoma 1

Calculated MW:

928 aa, 106 kDa

Observed MW:

110 kDa

Purification Method:

Protein A purification

CloneNo.:

252314G6

Recommended Dilutions:

WB: 1:2000-1:10000

## Applications

Tested Applications:

WB, ELISA

Species Specificity:

human

Positive Controls:

WB : Calyculin A treated HEK-293 cells,

## Background Information

RB1, also named as pp110, pRb and p105 Rb, belongs to the retinoblastoma protein (RB) family. Ser608 is located within the "spacer" region of RB1, which connects the A and B pocket domains. This region is critical for RB1's interaction with various cellular proteins.

## Storage

Storage:

Store at -20°C. Stable for one year after shipment.

Storage Buffer:

PBS with 0.02% sodium azide and 50% glycerol, pH7.3

Aliquoting is unnecessary for -20°C storage

For technical support and original validation data for this product please contact:

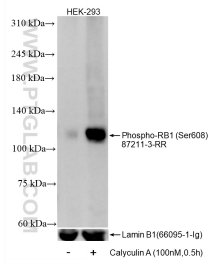
T: 4006900926

E: [Proteintech-CN@ptglab.com](mailto:Proteintech-CN@ptglab.com)

W: [ptgcn.com](http://ptgcn.com)

**This product is exclusively available under Proteintech Group brand and is not available to purchase from any other manufacturer.**

## Selected Validation Data



**Non-treated HEK-293 cells and Calyculin A treated HEK-293 cells were subjected to SDS PAGE followed by western blot with 87211-3-RR (Phospho-RB1 (Ser608) antibody) at dilution of 1:5000 incubated at room temperature for 1.5 hours. The membrane was stripped and re-blotted with Lamin B1 (66095-1-Ig) antibody as a loading control.**