

For Research Use Only

# APOL3 Recombinant monoclonal antibody, PBS Only

Catalog Number:87202-1-PBS



## Basic Information

<b>Catalog Number:</b> 87202-1-PBS	<b>GenBank Accession Number:</b> NM_145640	<b>Purification Method:</b> Protein A purification
<b>Source:</b> Rabbit	<b>GeneID (NCBI):</b> 80833	<b>CloneNo.:</b> 252351G6
<b>Isotype:</b> IgG	<b>UNIPROT ID:</b> O95236	
<b>Immunogen Catalog Number:</b> AG29687	<b>Full Name:</b> apolipoprotein L, 3	
	<b>Calculated MW:</b> 44 kDa	
	<b>Observed MW:</b> 44 kDa	

## Applications

**Tested Applications:**  
WB, Indirect ELISA

**Species Specificity:**  
human

## Background Information

Apolipoprotein L3 (APOL3) is a member of the apolipoprotein L gene family, and it is present in a cluster with other family members on chromosome 22. APOL3 is localized in the cytoplasm and plays a central role in cholesterol transport, affecting the movement of lipids, including cholesterol, and allowing the binding of lipids to organelles.

## Storage

**Storage:**  
Store at -80°C.  
**The product is shipped with ice packs. Upon receipt, store it immediately at -80°C**

**Storage Buffer:**  
PBS only, pH7.3

For technical support and original validation data for this product please contact:

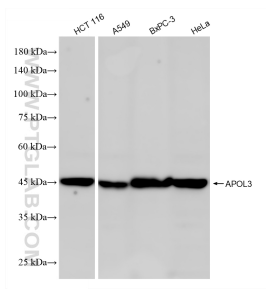
T: 4006900926

E: [Proteintech-CN@ptglab.com](mailto:Proteintech-CN@ptglab.com)

W: [ptgcn.com](http://ptgcn.com)

**This product is exclusively available under Proteintech Group brand and is not available to purchase from any other manufacturer.**

## Selected Validation Data



HCT 116 cells were subjected to SDS PAGE followed by western blot with 87202-1-RR (APOL3 antibody) at dilution of 1:2000 incubated at room temperature for 1.5 hours. This data was developed using the same antibody clone with 87202-1-PBS in a different storage buffer formulation.