

For Research Use Only

# COLEC11 Recombinant monoclonal antibody

Catalog Number:87193-1-RR



## Basic Information

<b>Catalog Number:</b> 87193-1-RR	<b>GenBank Accession Number:</b> BC000078	<b>Purification Method:</b> Protein A purification
<b>Source:</b> Rabbit	<b>GeneID (NCBI):</b> 78989	<b>CloneNo.:</b> 252260F7
<b>Isotype:</b> IgG	<b>UNIPROT ID:</b> Q9BWP8	<b>Recommended Dilutions:</b> WB: 1:500-1:2000
<b>Immunogen Catalog Number:</b> AG7374	<b>Full Name:</b> collectin sub-family member 11	
	<b>Calculated MW:</b> 29 kDa	
	<b>Observed MW:</b> 34 kDa	

## Applications

<b>Tested Applications:</b> WB, ELISA	<b>Positive Controls:</b> WB : rat liver tissue, human plasma, rat plasma
<b>Species Specificity:</b> human, rat	

## Background Information

COLEC11, also named as CL-K1 and Collectin-11, belongs to the COLEC10/COLEC11 family. It is a lectin that binds to various sugars: fucose > mannose. It does not bind to glucose, N-acetylglucosamine and N-acetylgalactosamine. COLEC11 binds to LPS. COLEC11 and MASP1 are two genes in the lectin complement pathway, they are mutated in 3MC syndrome, implicating this diverse inflammation-chemotaxis cascade in the etiology of human developmental disorders. COLEC11 serves as a guidance cue for neural crest cell migration (PMID:21258343).

## Storage

**Storage:**  
Store at -20°C. Stable for one year after shipment.  
**Storage Buffer:**  
PBS with 0.02% sodium azide and 50% glycerol, pH7.3  
Aliquoting is unnecessary for -20°C storage

For technical support and original validation data for this product please contact:

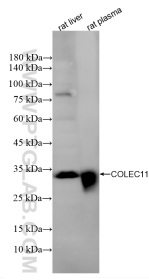
T: 4006900926

E: [Proteintech-CN@ptglab.com](mailto:Proteintech-CN@ptglab.com)

W: [ptgcn.com](http://ptgcn.com)

**This product is exclusively available under Proteintech Group brand and is not available to purchase from any other manufacturer.**

## Selected Validation Data



Various lysates were subjected to SDS PAGE followed by western blot with 87193-1-RR (COLEC11 antibody) at dilution of 1:1000 incubated at room temperature for 1.5 hours.