

For Research Use Only

PSMA7 Recombinant monoclonal antibody, PBS Only

Catalog Number: 87190-3-PBS



Basic Information

Catalog Number: 87190-3-PBS	GenBank Accession Number: BC004427	Purification Method: Protein A purification
Source: Rabbit	GeneID (NCBI): 5688	CloneNo.: 252503A7
Isotype: IgG	UNIPROT ID: O14818	
Immunogen Catalog Number: AG7389	Full Name: proteasome (prosome, macropain) subunit, alpha type, 7	
	Calculated MW: 28 kDa	
	Observed MW: 28-30 kDa	

Applications

Tested Applications:
WB, IP, Indirect ELISA

Species Specificity:
human, mouse, rat

Background Information

PSMA7 (Proteasome subunit alpha type-7) is also named HSPC and belongs to the peptidase T1A family. It is an α -type subunit of the 20S proteasome core complex and participates in degrading proteins through the ubiquitin-proteasome pathway (UPP) which plays an important role in the regulation of cell proliferation or cell cycle control, transcriptional regulation, immune and stress response, cell differentiation, and apoptosis (PMID: 19442227).

Storage

Storage:
Store at -80°C .
The product is shipped with ice packs. Upon receipt, store it immediately at -80°C

Storage Buffer:
PBS only, pH7.3

For technical support and original validation data for this product please contact:

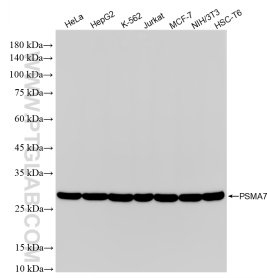
T: 4006900926

E: Proteintech-CN@ptglab.com

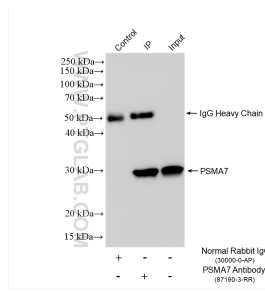
W: ptgcn.com

This product is exclusively available under Proteintech Group brand and is not available to purchase from any other manufacturer.

Selected Validation Data



Various lysates were subjected to SDS PAGE followed by western blot with 87190-3-RR (PSMA7 antibody) at dilution of 1:10000 incubated at room temperature for 1.5 hours. This data was developed using the same antibody clone with 87190-3-PBS in a different storage buffer formulation.



IP result of anti-PSMA7 (IP:87190-3-RR, 4ug; Detection:87190-3-RR 1:3000) with HeLa cells lysate 1320 ug. This data was developed using the same antibody clone with 87190-3-PBS in a different storage buffer formulation.