

For Research Use Only

CLPP Recombinant monoclonal antibody, PBS Only (Capture)

Catalog Number: 87187-3-PBS



Basic Information

Catalog Number:

87187-3-PBS

Source:

Rabbit

Isotype:

IgG

Immunogen Catalog Number:

AG8325

GenBank Accession Number:

BC002956

GeneID (NCBI):

8192

UNIPROT ID:

Q16740

Full Name:

ClpP caseinolytic peptidase, ATP-dependent, proteolytic subunit homolog (E. coli)

Calculated MW:

30 kDa

Observed MW:

26 kDa

Purification Method:

Protein A purification

CloneNo.:

252470B7

Applications

Tested Applications:

WB, Sandwich ELISA, Indirect ELISA

Species Specificity:

human, mouse, rat

Background Information

CLPP is the putative ATP-dependent Clp protease proteolytic subunit and also named as endopeptidase Clp. It belongs to the peptidase S14 family. Clp cleaves peptides in various proteins in a process that requires ATP hydrolysis. It may be responsible for a fairly general and central housekeeping function rather than for the degradation of specific substrates.

Storage

Storage:

Store at -80°C.

The product is shipped with ice packs. Upon receipt, store it immediately at -80°C

Storage Buffer:

PBS only, pH7.3

For technical support and original validation data for this product please contact:

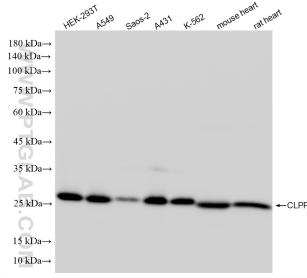
T: 4006900926

E: Proteintech-CN@ptglab.com

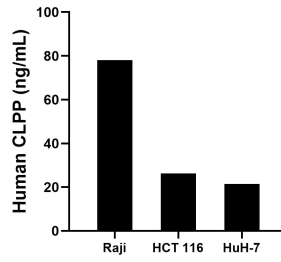
W: ptgcn.com

This product is exclusively available under Proteintech Group brand and is not available to purchase from any other manufacturer.

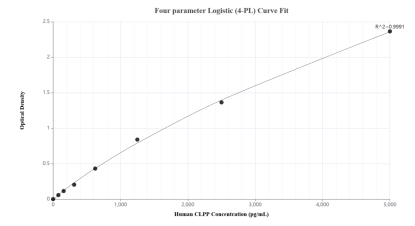
Selected Validation Data



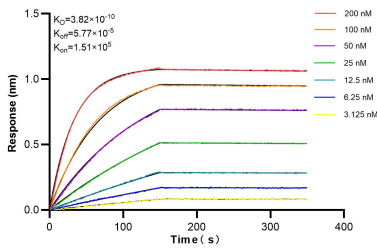
Various lysates were subjected to SDS PAGE followed by western blot with 87187-3-RR (CLPP antibody) at dilution of 1:10000 incubated at room temperature for 1.5 hours. This data was developed using the same antibody clone with 87187-3-PBS in a different storage buffer formulation.



The mean CLPP concentration was determined to be 78.1 ng/mL in Raji cell extract based on a 1.2 mg/mL extract load, 26.3 ng/mL in HCT 116 cell extract based on a 1.2 mg/mL extract load and 21.4 ng/mL in HuH-7 cell extract based on a 1.2 mg/mL extract load.



Sandwich ELISA standard curve of MP02909-2, Human CLPP Recombinant Matched Antibody Pair - PBS only. 87187-3-PBS was coated to a plate as the capture antibody and incubated with serial dilutions of standard Ag8325. 87187-2-PBS was HRP conjugated as the detection antibody. Range: 78.1-5000 pg/mL.



Bi-layer interferometry (BLI) kinetic assays of 87187-3-RR against Human CLPP were performed. The affinity constant is 0.382 nM.