

For Research Use Only

CLPP Recombinant monoclonal antibody, PBS Only (Capture/Detector)

Catalog Number: 87187-2-PBS



Basic Information

Catalog Number: 87187-2-PBS	GenBank Accession Number: BC002956	Purification Method: Protein A purification
Source: Rabbit	GeneID (NCBI): 8192	CloneNo.: 252470H2
Isotype: IgG	UNIPROT ID: Q16740	
Immunogen Catalog Number: AG8325	Full Name: ClpP caseinolytic peptidase, ATP-dependent, proteolytic subunit homolog (E. coli)	
	Calculated MW: 30 kDa	

Applications

Tested Applications:
Cytometric bead array, Sandwich ELISA, Indirect ELISA

Species Specificity:
human

Background Information

Storage

Storage:
Store at -80°C.
The product is shipped with ice packs. Upon receipt, store it immediately at -80°C

Storage Buffer:
PBS only, pH7.3

For technical support and original validation data for this product please contact:

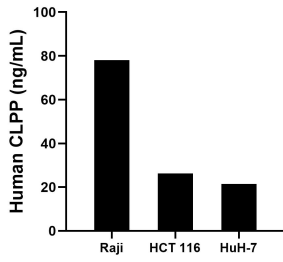
T: 4006900926

E: Proteintech-CN@ptglab.com

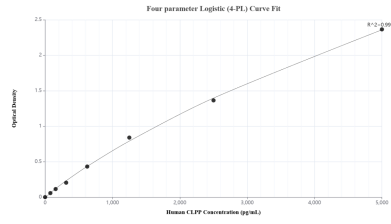
W: ptgcn.com

This product is exclusively available under Proteintech Group brand and is not available to purchase from any other manufacturer.

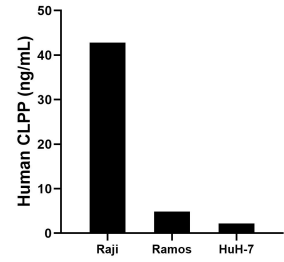
Selected Validation Data



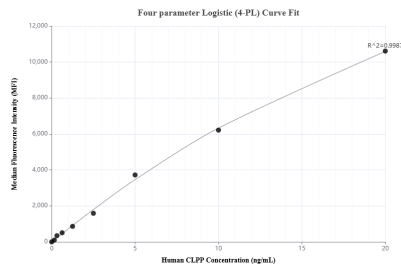
The mean CLPP concentration was determined to be 78.1 ng/mL in Raji cell extract based on a 1.2 mg/mL extract load, 26.3 ng/mL in HCT 116 cell extract based on a 1.2 mg/mL extract load and 21.4 ng/mL in HuH-7 cell extract based on a 1.2 mg/mL extract load.



Sandwich ELISA standard curve of MP02909-2, Human CLPP Recombinant Matched Antibody Pair - PBS only. 87187-3-PBS was coated to a plate as the capture antibody and incubated with serial dilutions of standard Ag8325. 87187-2-PBS was HRP conjugated as the detection antibody. Range: 78.1-5000 pg/mL.



The mean CLPP concentration was determined to be 42.8 ng/mL in Raji cell extract based on a 1.2 mg/mL extract load, 4.9 ng/mL in Ramos cell extract based on a 1.1 mg/mL extract load, 2.2 ng/mL in HuH-7 cell extract based on a 1.2 mg/mL extract load.



Cytometric bead array standard curve of MP02909-1, CLPP Recombinant Matched Antibody Pair, PBS Only. Capture antibody: 87187-2-PBS. Detection antibody: 87187-1-PBS. Standard: Ag8325. Range: 0.156-20 ng/mL.