

For Research Use Only

CLPP Recombinant monoclonal antibody, PBS Only (Detector)

Catalog Number: 87187-1-PBS



Basic Information

Catalog Number: 87187-1-PBS	GenBank Accession Number: BC002956	Purification Method: Protein A purification
Source: Rabbit	GeneID (NCBI): 8192	CloneNo.: 252470B3
Isotype: IgG	UNIPROT ID: Q16740	
Immunogen Catalog Number: AG8325	Full Name: ClpP caseinolytic peptidase, ATP-dependent, proteolytic subunit homolog (E. coli)	
	Calculated MW: 30 kDa	

Applications

Tested Applications:
Cytometric bead array, Indirect ELISA

Species Specificity:
human

Background Information

Storage

Storage:
Store at -80°C.
The product is shipped with ice packs. Upon receipt, store it immediately at -80°C

Storage Buffer:
PBS only, pH7.3

For technical support and original validation data for this product please contact:

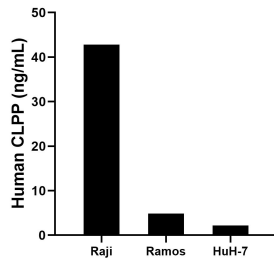
T: 4006900926

E: Proteintech-CN@ptglab.com

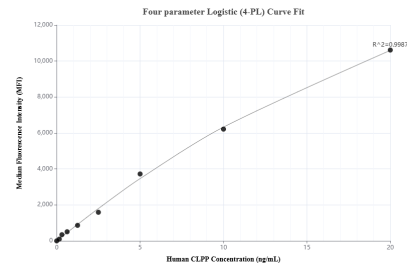
W: ptgcn.com

This product is exclusively available under Proteintech Group brand and is not available to purchase from any other manufacturer.

Selected Validation Data



The mean CLPP concentration was determined to be 42.8 ng/mL in Raji cell extract based on a 1.2 mg/mL extract load, 4.9 ng/mL in Ramos cell extract based on a 1.1 mg/mL extract load, 2.2 ng/mL in HuH-7 cell extract based on a 1.2 mg/mL extract load.



Cytometric bead array standard curve of MP02909-1, CLPP Recombinant Matched Antibody Pair, PBS Only. Capture antibody: 87187-2-PBS. Detection antibody: 87187-1-PBS. Standard: Ag8325. Range: 0.156-20 ng/mL.