

For Research Use Only

# SAA1+SAA2 Recombinant monoclonal antibody, PBS Only (Detector)

Catalog Number:87185-2-PBS



## Basic Information

|  |  |   |
|--|--|---|
| <b>Catalog Number:</b><br>87185-2-PBS      | <b>GenBank Accession Number:</b><br>GeneID (NCBI):<br>6288 | <b>Purification Method:</b><br>Protein A purification |
| <b>Source:</b><br>Rabbit                   | <b>UNIPROT ID:</b><br>PODJ18                               | <b>CloneNo.:</b><br>251324A4                          |
| <b>Isotype:</b><br>IgG                     | <b>Full Name:</b><br>serum amyloid A1                      |   |
| <b>Immunogen Catalog Number:</b><br>EG4687 | <b>Calculated MW:</b><br>14kDa                             |   |

## Applications

**Tested Applications:**  
Sandwich ELISA, Indirect ELISA

**Species Specificity:**  
human

## Background Information

### Storage

**Storage:**  
Store at -80°C.  
**The product is shipped with ice packs. Upon receipt, store it immediately at -80°C**

**Storage Buffer:**  
PBS only, pH7.3

For technical support and original validation data for this product please contact:

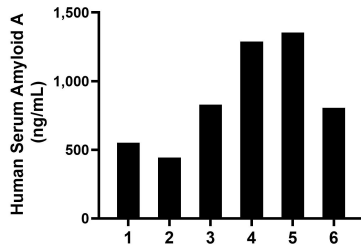
T: 4006900926

E: [Proteintech-CN@ptglab.com](mailto:Proteintech-CN@ptglab.com)

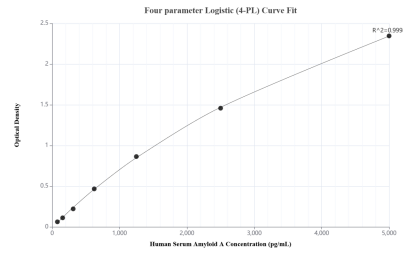
W: [ptgcn.com](http://ptgcn.com)

**This product is exclusively available under Proteintech Group brand and is not available to purchase from any other manufacturer.**

## Selected Validation Data



Plasma of six individual healthy human donors was measured. The Serum Amyloid A concentration of detected samples was determined to be 878.5 ng/mL with a range of 443.2-1,353.9 ng/mL.



Sandwich ELISA standard curve of MP02910-2, Human Serum Amyloid A Recombinant Matched Antibody Pair - PBS only. 87184-2-PBS was coated to a plate as the capture antibody and incubated with serial dilutions of standard Eg4687. 87185-2-PBS was HRP conjugated as the detection antibody. Range: 78.1-5000 pg/mL.