

For Research Use Only

# Serum amyloid A-1/SAA1 Recombinant monoclonal antibody, PBS Only (Capture)



Catalog Number: 87184-2-PBS

## Basic Information

<b>Catalog Number:</b> 87184-2-PBS	<b>GenBank Accession Number:</b> GeneID (NCBI): 6288	<b>Purification Method:</b> Protein A purification
<b>Source:</b> Rabbit	<b>UNIPROT ID:</b> PODJ18	<b>CloneNo.:</b> 251324D4
<b>Isotype:</b> IgG	<b>Full Name:</b> serum amyloid A1	
<b>Immunogen Catalog Number:</b> EG4687	<b>Calculated MW:</b> 14kDa	

## Applications

**Tested Applications:**  
Sandwich ELISA, Indirect ELISA

**Species Specificity:**  
human

## Background Information

### Storage

**Storage:**  
Store at -80°C.  
**The product is shipped with ice packs. Upon receipt, store it immediately at -80°C**

**Storage Buffer:**  
PBS only, pH7.3

For technical support and original validation data for this product please contact:

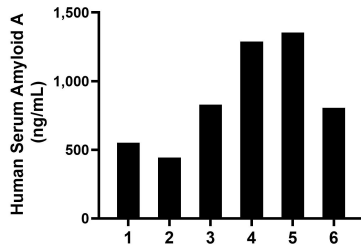
T: 4006900926

E: [Proteintech-CN@ptglab.com](mailto:Proteintech-CN@ptglab.com)

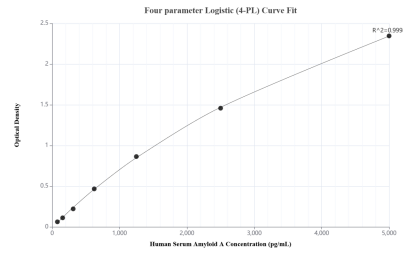
W: [ptgcn.com](http://ptgcn.com)

**This product is exclusively available under Proteintech Group brand and is not available to purchase from any other manufacturer.**

## Selected Validation Data



Plasma of six individual healthy human donors was measured. The Serum Amyloid A concentration of detected samples was determined to be 878.5 ng/mL with a range of 443.2-1,353.9 ng/mL.



Sandwich ELISA standard curve of MP02910-2, Human Serum Amyloid A Recombinant Matched Antibody Pair - PBS only. 87184-2-PBS was coated to a plate as the capture antibody and incubated with serial dilutions of standard Eg4687. 87185-2-PBS was HRP conjugated as the detection antibody. Range: 78.1-5000 pg/mL.