

For Research Use Only

TMX2 Recombinant monoclonal antibody, PBS Only (Detector)

Catalog Number: 87183-1-PBS



Basic Information

Catalog Number: 87183-1-PBS	GenBank Accession Number: BC000666	Purification Method: Protein A purification
Source: Rabbit	GeneID (NCBI): 51075	CloneNo.: 252474C2
Isotype: IgG	UNIPROT ID: Q9Y320	
Immunogen Catalog Number: AG13828	Full Name: thioredoxin-related transmembrane protein 2	
	Calculated MW: 296 aa, 34 kDa	
	Observed MW: 34 kDa	

Applications

Tested Applications:
WB, Cytometric bead array, Indirect ELISA

Species Specificity:
human

Background Information

Thioredoxin-related transmembrane proteins (TMXs) are protein disulfide isomerase (PDI) family members and possess a transmembrane region. TMX2 cDNA was first isolated in 2003, and TMX2 mRNA has been found in a variety of human tissues, with the highest levels in the heart, brain, liver, kidney, and pancreas.

Storage

Storage:
Store at -80°C.
The product is shipped with ice packs. Upon receipt, store it immediately at -80°C

Storage Buffer:
PBS only, pH7.3

For technical support and original validation data for this product please contact:

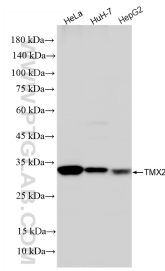
T: 4006900926

E: Proteintech-CN@ptglab.com

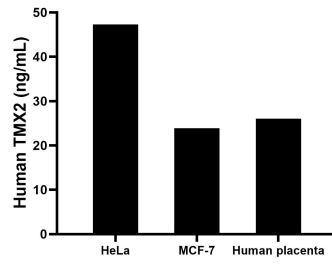
W: ptgcn.com

This product is exclusively available under Proteintech Group brand and is not available to purchase from any other manufacturer.

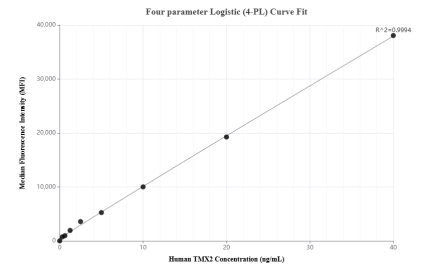
Selected Validation Data



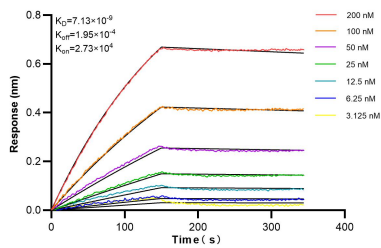
Various lysates were subjected to SDS PAGE followed by western blot with 87183-1-RR (TMX2 antibody) at dilution of 1:20000 incubated at room temperature for 1.5 hours. This data was developed using the same antibody clone with 87183-1-PBS in a different storage buffer formulation.



The mean TMX2 concentration was determined to be 47.3 ng/mL in HeLa cell extract based on a 1.2 mg/mL extract load, 23.9 ng/mL in MCF-7 cell extract based on a 1.2 mg/mL extract load, 26.0 ng/mL in human placenta cell extract based on a 3.2 mg/mL extract load.



Cytometric bead array standard curve of MP02911-1, TMX2 Recombinant Matched Antibody Pair, PBS Only. Capture antibody: 87183-2-PBS. Detection antibody: 87183-1-PBS. Standard: Ag13828. Range: 0.312-40 ng/mL.



Biolayer interferometry (BLI) kinetic assays of 87183-1-RR against Human TMX2 were performed. The affinity constant is 7.13 nM.