

For Research Use Only

# MEIS1 Recombinant monoclonal antibody, PBS Only (Capture)

Catalog Number: 87182-5-PBS



## Basic Information

<b>Catalog Number:</b> 87182-5-PBS	<b>GenBank Accession Number:</b> BC043503	<b>Purification Method:</b> Protein A purification
<b>Source:</b> Rabbit	<b>GeneID (NCBI):</b> 4211	<b>CloneNo.:</b> 252471D8
<b>Isotype:</b> IgG	<b>UNIPROT ID:</b> O00470	
<b>Immunogen Catalog Number:</b> AG33675	<b>Full Name:</b> Meis homeobox 1	
	<b>Calculated MW:</b> 43, 50 kDa	

## Applications

**Tested Applications:**  
Sandwich ELISA, Indirect ELISA

**Species Specificity:**  
human

## Background Information

### Storage

**Storage:**  
Store at -80°C.  
**The product is shipped with ice packs. Upon receipt, store it immediately at -80°C**

**Storage Buffer:**  
PBS only, pH7.3

For technical support and original validation data for this product please contact:

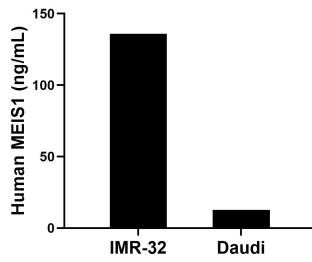
T: 4006900926

E: [Proteintech-CN@ptglab.com](mailto:Proteintech-CN@ptglab.com)

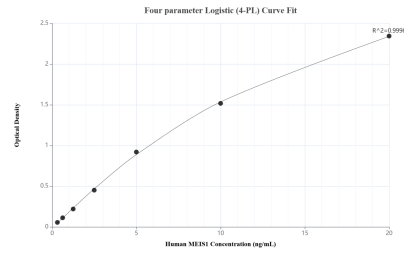
W: [ptgcn.com](http://ptgcn.com)

**This product is exclusively available under Proteintech Group brand and is not available to purchase from any other manufacturer.**

## Selected Validation Data



The mean MEIS1 concentration was determined to be 136.00 ng/mL in IMR-32 cell extract based on a 1.70 mg/mL extract load and 12.80 ng/mL in Daudi cell extract based on a 1.30 mg/mL extract load.



Sandwich ELISA standard curve of MP02913-2, Human MEIS1 Recombinant Matched Antibody Pair - PBS only. 87182-5-PBS was coated to a plate as the capture antibody and incubated with serial dilutions of standard Ag33675. 87182-4-PBS was HRP conjugated as the detection antibody. Range: 0.313-20 ng/mL