

For Research Use Only

MEIS1 Recombinant monoclonal antibody, PBS Only (Detector)

Catalog Number: 87182-4-PBS



Basic Information

Catalog Number:

87182-4-PBS

Source:

Rabbit

Isotype:

IgG

Immunogen Catalog Number:

AG33675

GenBank Accession Number:

BC043503

GeneID (NCBI):

4211

UNIPROT ID:

O00470

Full Name:

Meis homeobox 1

Calculated MW:

43, 50 kDa

Purification Method:

Protein A purification

CloneNo.:

252471F8

Applications

Tested Applications:

Sandwich ELISA, Indirect ELISA

Species Specificity:

human

Background Information

Storage

Storage:

Store at -80°C.

The product is shipped with ice packs. Upon receipt, store it immediately at -80°C

Storage Buffer:

PBS only, pH7.3

For technical support and original validation data for this product please contact:

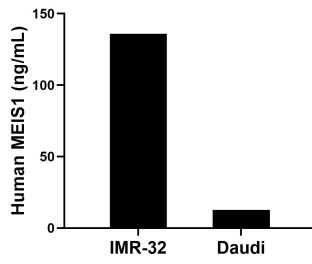
T: 4006900926

E: Proteintech-CN@ptglab.com

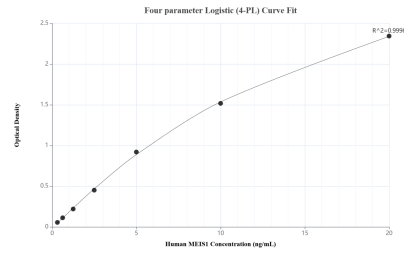
W: ptgcn.com

This product is exclusively available under Proteintech Group brand and is not available to purchase from any other manufacturer.

Selected Validation Data



The mean MEIS1 concentration was determined to be 136.00 ng/mL in IMR-32 cell extract based on a 1.70 mg/mL extract load and 12.80 ng/mL in Daudi cell extract based on a 1.30 mg/mL extract load.



Sandwich ELISA standard curve of MP02913-2, Human MEIS1 Recombinant Matched Antibody Pair - PBS only. 87182-5-PBS was coated to a plate as the capture antibody and incubated with serial dilutions of standard Ag33675. 87182-4-PBS was HRP conjugated as the detection antibody. Range: 0.313-20 ng/mL