

For Research Use Only

MEIS1 Recombinant monoclonal antibody, PBS Only (Detector)

Catalog Number: 87182-1-PBS



Basic Information

Catalog Number:

87182-1-PBS

Source:

Rabbit

Isotype:

IgG

Immunogen Catalog Number:

AG33675

GenBank Accession Number:

BC043503

GeneID (NCBI):

4211

UNIPROT ID:

O00470

Full Name:

Meis homeobox 1

Calculated MW:

43, 50 kDa

Purification Method:

Protein A purification

CloneNo.:

252471B4

Applications

Tested Applications:

Cytometric bead array, Indirect ELISA

Species Specificity:

human

Background Information

Storage

Storage:

Store at -80°C.

The product is shipped with ice packs. Upon receipt, store it immediately at -80°C

Storage Buffer:

PBS only, pH7.3

For technical support and original validation data for this product please contact:

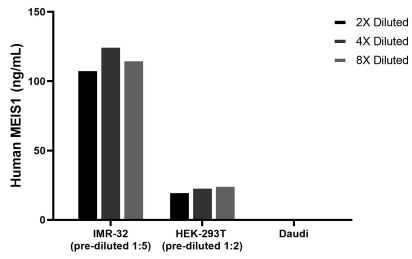
T: 4006900926

E: Proteintech-CN@ptglab.com

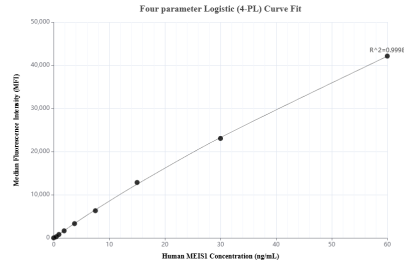
W: ptgcn.com

This product is exclusively available under Proteintech Group brand and is not available to purchase from any other manufacturer.

Selected Validation Data



The mean MEIS1 concentration was determined to be 116.8 ng/mL in IMR-32 cell extract based on a 1.7 mg/mL extract load, 23.4 ng/mL in HEK-293T cell extract based on a 1.2 mg/mL extract load, Daudi cell extract were served as a negative control.



Cytometric bead array standard curve of MP02913-1, MEIS1 Recombinant Matched Antibody Pair, PBS Only. Capture antibody: 87182-2-PBS. Detection antibody: 87182-1-PBS. Standard: Ag33675. Range: 0.469-60 ng/mL.