

For Research Use Only

# ERCC1 Recombinant monoclonal antibody

Catalog Number:87175-3-RR



## Basic Information

<b>Catalog Number:</b> 87175-3-RR	<b>GenBank Accession Number:</b> BC052813	<b>Purification Method:</b> Protein A purification
<b>Source:</b> Rabbit	<b>GeneID (NCBI):</b> 2067	<b>CloneNo.:</b> 252372B6
<b>Isotype:</b> IgG	<b>UNIPROT ID:</b> P07992	<b>Recommended Dilutions:</b> WB: 1:2000-1:10000 IF/ICC: 1:400-1:1600
<b>Immunogen Catalog Number:</b> AG6112	<b>Full Name:</b> excision repair cross-complementing rodent repair deficiency, complementation group 1 (includes overlapping antisense sequence)	
	<b>Calculated MW:</b> 33 kDa	
	<b>Observed MW:</b> 40 kDa	

## Applications

<b>Tested Applications:</b> WB, IF/ICC, ELISA	<b>Positive Controls:</b> WB : HeLa cells, HepG2 cells, MCF-7 cells, SKOV-3 cells, T-47D cells, HCT 116 cells, COLO 320 cells
<b>Species Specificity:</b> human	<b>IF/ICC :</b> HeLa cells,

## Background Information

Excision Repair Cross Complementing 1 (ERCC1) is a structure-specific endonuclease that is responsible for the 5'-incision during DNA repair. It forms a complex with ERCC11, XPF and ERCC4, which are required in both recombinatorial repair and nucleotide excision repair. It has been found that ERCC1, together with RRM1, are determinants of survival after surgical treatment of early-stage, non-small-cell lung cancer. (Ref: Simon, ER. 2005). The calculated molecular weight of ERCC1 is 33 kDa, but the modified ERCC1 is about 38 kDa.

## Storage

**Storage:**  
Store at -20°C. Stable for one year after shipment.  
**Storage Buffer:**  
PBS with 0.02% sodium azide and 50% glycerol, pH7.3  
Aliquoting is unnecessary for -20°C storage

For technical support and original validation data for this product please contact:

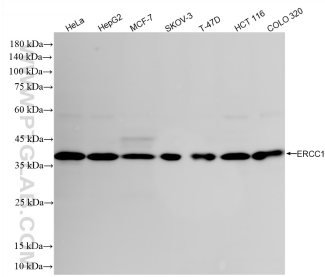
T: 4006900926

E: [Proteintech-CN@ptglab.com](mailto:Proteintech-CN@ptglab.com)

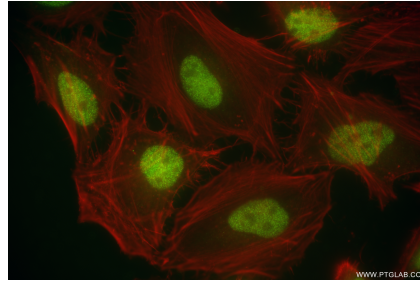
W: [ptgcn.com](http://ptgcn.com)

This product is exclusively available under Proteintech Group brand and is not available to purchase from any other manufacturer.

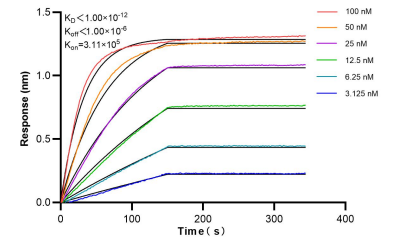
## Selected Validation Data



Various lysates were subjected to SDS PAGE followed by western blot with 87175-3-RR (ERCC1 antibody) at dilution of 1:5000 incubated at room temperature for 1.5 hours.



Immunofluorescent analysis of (4% PFA) fixed HeLa cells using ERCC1 antibody (87175-3-RR, Clone: 252372B6) at dilution of 1:800 and CoraLite® 488-Conjugated Goat Anti-Rabbit IgG(H+L) (SA00013-2), CL594-Phalloidin (red).



Bi-layer interferometry (BLI) kinetic assays of 87175-3-RR against Human ERCC1 were performed. The affinity constant is below 1 pM.