

For Research Use Only

EBP50/NHERF-1 Recombinant monoclonal antibody

Catalog Number: 87174-1-RR



Basic Information

Catalog Number:

87174-1-RR

Source:

Rabbit

Isotype:

IgG

Immunogen Catalog Number:

AG30878

GenBank Accession Number:

NM_004252

GeneID (NCBI):

9368

UNIPROT ID:

O14745

Full Name:

solute carrier family 9
(sodium/hydrogen exchanger),
member 3 regulator 1

Calculated MW:

39 kDa

Observed MW:

50 kDa

Purification Method:

Protein A purification

CloneNo.:

252465A2

Recommended Dilutions:

WB: 1:5000-1:50000

Applications

Tested Applications:

WB, ELISA

Species Specificity:

human, rat

Positive Controls:

WB: HCT 116 cells, rat kidney tissue, HeLa cells,
HepG2 cells, MCF-7 cells, MDA-MB-231 cells

Background Information

Na⁺/H⁺ exchanger regulatory factor 1 (NHERF-1, also known as EBP50 ezrin-binding protein of 50 kDa, SLCA9A3R1) is a phosphoprotein that assembles multiprotein complexes via two PDZ domains and a C-terminal ezrin-binding domain. NHERF-1 was initially recognized as a scaffolding protein that recruits membrane transporters/receptors and cytoplasmic signaling proteins into functional complexes localized at or near the plasma membrane in epithelial cells (PMID: 19308292).

Storage

Storage:

Store at -20°C. Stable for one year after shipment.

Storage Buffer:

PBS with 0.02% sodium azide and 50% glycerol, pH7.3

Aliquoting is unnecessary for -20°C storage

For technical support and original validation data for this product please contact:

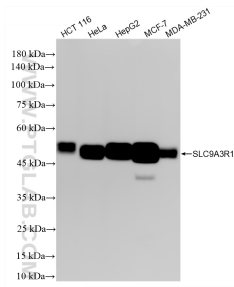
T: 4006900926

E: Proteintech-CN@ptglab.com

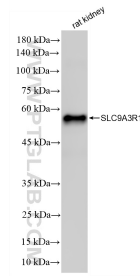
W: ptgcn.com

This product is exclusively available under Proteintech Group brand and is not available to purchase from any other manufacturer.

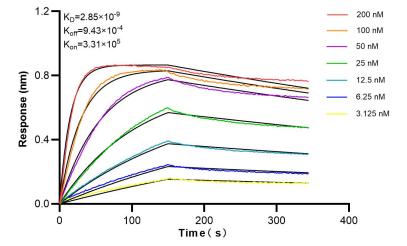
Selected Validation Data



Various lysates were subjected to SDS PAGE followed by western blot with 87174-1-RR (SLC9A3R1 antibody) at dilution of 1:40000 incubated at room temperature for 1.5 hours.



rat kidney tissue were subjected to SDS PAGE followed by western blot with 87174-1-RR (SLC9A3R1 antibody) at dilution of 1:40000 incubated at room temperature for 1.5 hours.



Bi-layer interferometry (BLI) kinetic assays of 87174-1-RR against Human EBP50/NHERF-1 were performed. The affinity constant is 2.85 nM.