

For Research Use Only

EBP50/NHERF-1 Recombinant monoclonal antibody, PBS Only (Detector)

Catalog Number: 87174-1-PBS



Basic Information

| | | |
|---|--|---|
| Catalog Number: 87174-1-PBS | GenBank Accession Number: NM_004252 | Purification Method: Protein A purification |
| Source: Rabbit | GeneID (NCBI): 9368 | CloneNo.: 252465A2 |
| Isotype: IgG | UNIPROT ID: O14745 | |
| Immunogen Catalog Number: AG30878 | Full Name: solute carrier family 9 (sodium/hydrogen exchanger), member 3 regulator 1 | |
| | Calculated MW: 39 kDa | |
| | Observed MW: 50 kDa | |

Applications

Tested Applications:
WB, Cytometric bead array, Indirect ELISA

Species Specificity:
human, rat

Background Information

Na⁺/H⁺ exchanger regulatory factor 1 (NHERF-1, also known as EBP50 ezrin-binding protein of 50 kDa, SLCA9A3R1) is a phosphoprotein that assembles multiprotein complexes via two PDZ domains and a C-terminal ezrin-binding domain. NHERF-1 was initially recognized as a scaffolding protein that recruits membrane transporters/receptors and cytoplasmic signaling proteins into functional complexes localized at or near the plasma membrane in epithelial cells (PMID: 19308292).

Storage

Storage:
Store at -80°C.
The product is shipped with ice packs. Upon receipt, store it immediately at -80°C

Storage Buffer:
PBS only, pH7.3

For technical support and original validation data for this product please contact:

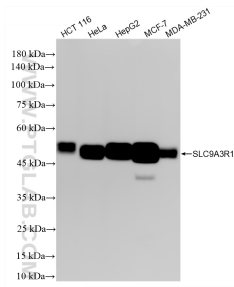
T: 4006900926

E: Proteintech-CN@ptglab.com

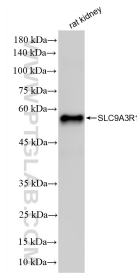
W: ptgcn.com

This product is exclusively available under Proteintech Group brand and is not available to purchase from any other manufacturer.

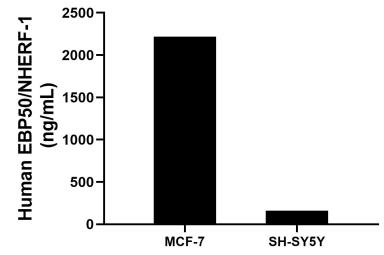
Selected Validation Data



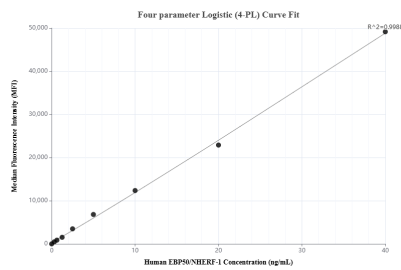
Various lysates were subjected to SDS PAGE followed by western blot with 87174-1-RR (SLC9A3R1 antibody) at dilution of 1:40000 incubated at room temperature for 1.5 hours. This data was developed using the same antibody clone with 87174-1-PBS in a different storage buffer formulation.



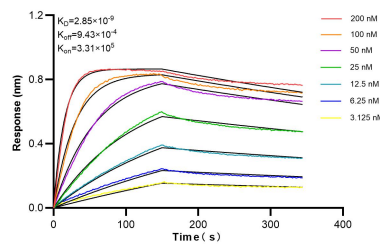
rat kidney tissue were subjected to SDS PAGE followed by western blot with 87174-1-RR (SLC9A3R1 antibody) at dilution of 1:40000 incubated at room temperature for 1.5 hours. This data was developed using the same antibody clone with 87174-1-PBS in a different storage buffer formulation.



The mean EBP50/NHERF-1 concentration was determined to be 2219.3 ng/mL in MCF-7 cell extract based on a 1.2 mg/mL extract load, 162.0 ng/mL in SH-SY5Y cell extract based on a 1.2 mg/mL extract load.



Cytometric bead array standard curve of MPO2896-1, EBP50/NHERF-1 Recombinant Matched Antibody Pair, PBS Only. Capture antibody: 87174-2-PBS. Detection antibody: 87174-1-PBS. Standard: Ag30878. Range: 0.312-40 ng/mL.



Biolayer interferometry (BLI) kinetic assays of 87174-1-RR against Human EBP50/NHERF-1 were performed. The affinity constant is 2.85 nM.