

For Research Use Only

LY86 Recombinant monoclonal antibody, PBS Only (Detector)

Catalog Number: 87173-3-PBS



Basic Information

Catalog Number: 87173-3-PBS	GenBank Accession Number: NM_004271.4	Purification Method: Protein A purification
Source: Rabbit	GeneID (NCBI): 9450	CloneNo.: 252168D6
Isotype: IgG	UNIPROT ID: O95711	
Immunogen Catalog Number: EG3108	Full Name: lymphocyte antigen 86	
	Calculated MW: 18 kDa	

Applications

Tested Applications:
Sandwich ELISA, Indirect ELISA

Species Specificity:
human

Background Information

Storage

Storage:
Store at -80°C.
The product is shipped with ice packs. Upon receipt, store it immediately at -80°C

Storage Buffer:
PBS only, pH7.3

For technical support and original validation data for this product please contact:

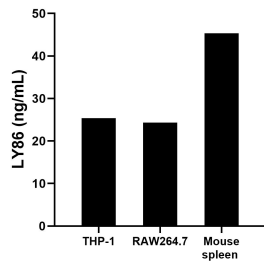
T: 4006900926

E: Proteintech-CN@ptglab.com

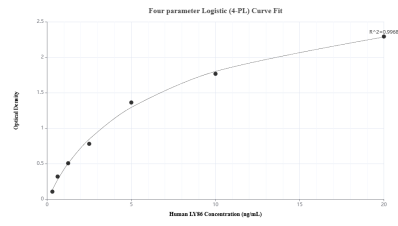
W: ptgcn.com

This product is exclusively available under Proteintech Group brand and is not available to purchase from any other manufacturer.

Selected Validation Data



The mean LY86 concentration was determined to be 25.36 ng/mL in THP-1 cell extract based on a 1.2 mg/mL extract load, 24.32 ng/mL in RAW264.7 cell extract based on a 1.3 mg/mL extract load and 45.34 ng/mL in mouse spleen tissue extract based on a 6.4 mg/mL extract load.



Sandwich ELISA standard curve of MP02941-1, Human LY86 Recombinant Matched Antibody Pair - PBS only. 87173-1-PBS was coated to a plate as the capture antibody and incubated with serial dilutions of standard Eg3108. 87173-3-PBS was HRP conjugated as the detection antibody. Range: 0.313-20 ng/mL