

For Research Use Only

# LY86 Recombinant monoclonal antibody, PBS Only (Capture)

Catalog Number: 87173-1-PBS



## Basic Information

<b>Catalog Number:</b> 87173-1-PBS	<b>GenBank Accession Number:</b> NM_004271.4	<b>Purification Method:</b> Protein A purification
<b>Source:</b> Rabbit	<b>GeneID (NCBI):</b> 9450	<b>CloneNo.:</b> 252168G12
<b>Isotype:</b> IgG	<b>UNIPROT ID:</b> O95711	
<b>Immunogen Catalog Number:</b> EG3108	<b>Full Name:</b> lymphocyte antigen 86	
	<b>Calculated MW:</b> 18 kDa	
	<b>Observed MW:</b> 20 kDa	

## Applications

**Tested Applications:**  
WB, Sandwich ELISA, Indirect ELISA

**Species Specificity:**  
human

## Background Information

LY86, also known as protein MD-1, is a secreted glycoprotein that is associated with RP105 (TLR family proteins) and plays a significant role in the B cell surface expression of RP105. The RP105/MD-1 complex is expressed on immune cells, including B cells, macrophages, and dendritic cells. (PMID: 37861500)

## Storage

**Storage:**  
Store at -80°C.  
**The product is shipped with ice packs. Upon receipt, store it immediately at -80°C**

**Storage Buffer:**  
PBS only, pH7.3

For technical support and original validation data for this product please contact:

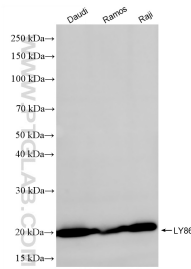
T: 4006900926

E: [Proteintech-CN@ptglab.com](mailto:Proteintech-CN@ptglab.com)

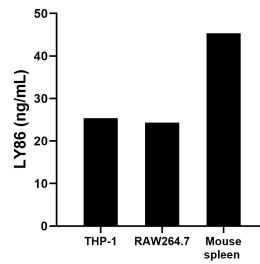
W: [ptgcn.com](http://ptgcn.com)

**This product is exclusively available under Proteintech Group brand and is not available to purchase from any other manufacturer.**

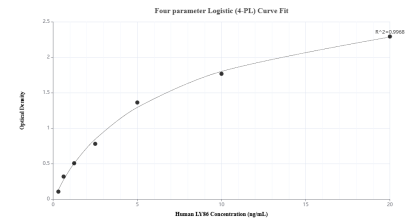
## Selected Validation Data



Various lysates were subjected to SDS PAGE followed by western blot with 87173-1-RR (LY86 antibody) at dilution of 1:2000 incubated at room temperature for 1.5 hours. This data was developed using the same antibody clone with 87173-1-PBS in a different storage buffer formulation.



The mean LY86 concentration was determined to be 25.36 ng/mL in THP-1 cell extract based on a 1.2 mg/mL extract load, 24.32 ng/mL in RAW264.7 cell extract based on a 1.3 mg/mL extract load and 45.34 ng/mL in mouse spleen tissue extract based on a 6.4 mg/mL extract load.



Sandwich ELISA standard curve of MP02941-1, Human LY86 Recombinant Matched Antibody Pair - PBS only. 87173-1-PBS was coated to a plate as the capture antibody and incubated with serial dilutions of standard Eg3108. 87173-3-PBS was HRP conjugated as the detection antibody. Range: 0.313-20 ng/mL