

For Research Use Only

# INPPL1 Recombinant monoclonal antibody, PBS Only

Catalog Number: 87161-1-PBS



## Basic Information

Catalog Number:

87161-1-PBS

Source:

Rabbit

Isotype:

IgG

GenBank Accession Number:

BC140853

GeneID (NCBI):

3636

UNIPROT ID:

O15357

Full Name:

inositol polyphosphate phosphatase-like 1

Calculated MW:

1258 aa, 139 kDa

Observed MW:

150 kDa

Purification Method:

Protein A purification

CloneNo.:

252293A4

## Applications

Tested Applications:

WB, IHC, Indirect ELISA

Species Specificity:

human, mouse

## Background Information

Inositol polyphosphate phosphatase-like protein 1 (INPPL1) belongs to the inositol and phosphatidylinositol 5-phosphatase family, also known as SH2 domain-containing inositol 5'-phosphatase 2 (SHIP2), is ubiquitous in all organizations. SHIP2 is constitutively tyrosine-phosphorylated in chronic myeloid leukemia progenitor cells. In B cells, SHIP2 was most tyrosine phosphorylated after BCR and FC- $\gamma$  riib crosslinking and was associated with Shc, but not after BCR stimulation alone.

## Storage

Storage:

Store at -80°C.

The product is shipped with ice packs. Upon receipt, store it immediately at -80°C

Storage Buffer:

PBS only, pH7.3

For technical support and original validation data for this product please contact:

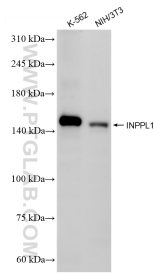
T: 4006900926

E: [Proteintech-CN@ptglab.com](mailto:Proteintech-CN@ptglab.com)

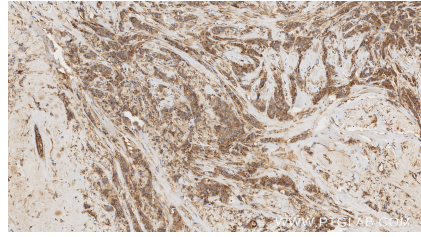
W: [ptgcn.com](http://ptgcn.com)

This product is exclusively available under Proteintech Group brand and is not available to purchase from any other manufacturer.

## Selected Validation Data



Various lysates were subjected to SDS PAGE followed by western blot with 87161-1-RR (INPPL1 antibody) at dilution of 1:1000 incubated at room temperature for 1.5 hours. This data was developed using the same antibody clone with 87161-1-PBS in a different storage buffer formulation.



Immunohistochemical analysis of paraffin-embedded human breast cancer tissue slide using 87161-1-RR (INPPL1 antibody) at dilution of 1:1000 (under 10x lens). Heat mediated antigen retrieval with Tris-EDTA buffer (pH 9.0). This data was developed using the same antibody clone with 87161-1-PBS in a different storage buffer formulation.