

For Research Use Only

# PDE1A Recombinant monoclonal antibody

Catalog Number: 87154-1-RR



## Basic Information

<b>Catalog Number:</b> 87154-1-RR	<b>GenBank Accession Number:</b> BC022480	<b>Purification Method:</b> Protein A purification
<b>Source:</b> Rabbit	<b>GeneID (NCBI):</b> 5136	<b>CloneNo.:</b> 252285B6
<b>Isotype:</b> IgG	<b>UNIPROT ID:</b> P54750	<b>Recommended Dilutions:</b> WB: 1:1000-1:8000
<b>Immunogen Catalog Number:</b> AG3157	<b>Full Name:</b> phosphodiesterase 1A, calmodulin-dependent	
	<b>Calculated MW:</b> 545 aa, 61 kDa	
	<b>Observed MW:</b> 61 kDa	

## Applications

<b>Tested Applications:</b> WB, ELISA	<b>Positive Controls:</b> WB : mouse brain tissue, rat brain tissue
<b>Species Specificity:</b> human, mouse, rat	

## Background Information

PDE1A (Calcium/calmodulin-dependent 3',5'-cyclic nucleotide phosphodiesterase 1A) is also named as Cam-PDE 1A, 61 kDa Cam-PDE, hCam-1 and belongs to the cyclic nucleotide phosphodiesterase (PDEs) family. The PDEs play a role in signal transduction by regulating intracellular cyclic nucleotide concentrations through hydrolysis of cAMP and/or cGMP to their respective nucleoside 5-prime monophosphates. This protein has 9 isoforms produced by alternative splicing with the molecular weight from 57 kDa to 63 kDa. There is a report showing the major 67-kD PDE1A isoform identified in human sperm associates tightly with calmodulin and is not activated by Ca(2+)/calmodulin (PMID:12135876).

## Storage

**Storage:**  
Store at -20°C. Stable for one year after shipment.  
**Storage Buffer:**  
PBS with 0.02% sodium azide and 50% glycerol, pH7.3  
Aliquoting is unnecessary for -20°C storage

For technical support and original validation data for this product please contact:

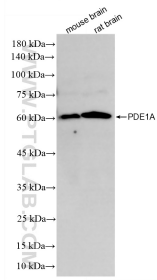
T: 4006900926

E: [Proteintech-CN@ptglab.com](mailto:Proteintech-CN@ptglab.com)

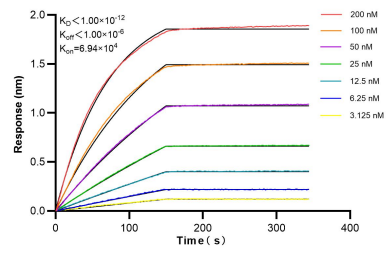
W: [ptgcn.com](http://ptgcn.com)

This product is exclusively available under Proteintech Group brand and is not available to purchase from any other manufacturer.

## Selected Validation Data



Various lysates were subjected to SDS PAGE followed by western blot with 87154-1-RR (PDE1A antibody) at dilution of 1:4000 incubated at room temperature for 1.5 hours.



Biolayer interferometry (BLI) kinetic assays of 87154-1-RR against Human PDE1A were performed. The affinity constant is below 1 pM.