

For Research Use Only

CHMP2B Recombinant monoclonal antibody, PBS Only (Detector)

Catalog Number: 87151-2-PBS



Basic Information

Catalog Number:

87151-2-PBS

Source:

Rabbit

Isotype:

IgG

Immunogen Catalog Number:

AG3222

GenBank Accession Number:

BC001553

GeneID (NCBI):

25978

UNIPROT ID:

Q9UQN3

Full Name:

chromatin modifying protein 2B

Calculated MW:

24 kDa

Purification Method:

Protein A purification

CloneNo.:

252352E2

Applications

Tested Applications:

Sandwich ELISA, Indirect ELISA

Species Specificity:

human

Background Information

Storage

Storage:

Store at -80°C.

The product is shipped with ice packs. Upon receipt, store it immediately at -80°C

Storage Buffer:

PBS only, pH7.3

For technical support and original validation data for this product please contact:

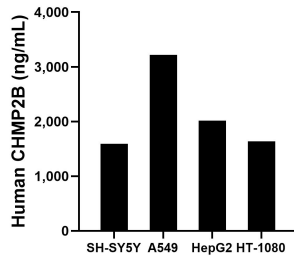
T: 4006900926

E: Proteintech-CN@ptglab.com

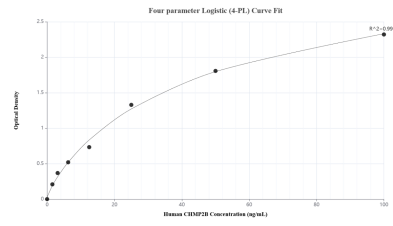
W: ptgcn.com

This product is exclusively available under Proteintech Group brand and is not available to purchase from any other manufacturer.

Selected Validation Data



The mean CHMP2B concentration was determined to be 1,591.69 ng/mL in SH-SY5Y cell extract based on a 1.20 mg/mL extract load, 3,218.99 ng/mL in A549 cell extract based on a 1.20 mg/mL extract load, 2,013.37 ng/mL in HepG2 cell extract based on a 1.20 mg/mL extract load and 1,636.28 ng/mL in HT-1080 cell extract based on a 1.20 mg/mL extract load.



Sandwich ELISA standard curve of MP02936-1, Human CHMP2B Recombinant Matched Antibody Pair - PBS only. 87151-3-PBS was coated to a plate as the capture antibody and incubated with serial dilutions of standard Ag3222. 87151-2-PBS was HRP conjugated as the detection antibody. Range: 1.56-100 ng/mL