

For Research Use Only

# CHMP2B Recombinant monoclonal antibody, PBS Only

Catalog Number: 87151-1-PBS



## Basic Information

<b>Catalog Number:</b> 87151-1-PBS	<b>GenBank Accession Number:</b> BC001553	<b>Purification Method:</b> Protein A purification
<b>Source:</b> Rabbit	<b>GeneID (NCBI):</b> 25978	<b>CloneNo.:</b> 252352F2
<b>Isotype:</b> IgG	<b>UNIPROT ID:</b> Q9UQN3	
<b>Immunogen Catalog Number:</b> AG3222	<b>Full Name:</b> chromatin modifying protein 2B	
	<b>Calculated MW:</b> 24 kDa	
	<b>Observed MW:</b> 30-32 kDa	

## Applications

**Tested Applications:**  
WB, IF/ICC, Indirect ELISA

**Species Specificity:**  
human, mouse, rat

## Background Information

CHMP2B, chromatin-modifying protein 2b, also named CHMP2.5, VPS2B, and VPS2-2, belongs to the chromatin-modifying protein / charged multivesicular body protein (CHMP) family. It is a component of the endosomal sorting complex required for transport III (ESCRT-III), which is involved in endosomal and autophagic trafficking of proteins to lysosomes for degradation. Mutations of CHMP2B lead to C-terminal truncation or are replaced with mis-splicing C-termini and cause frontotemporal lobar degeneration (FTLD). In CHMP2B mutation patients, p62- and ubiquitin-positive, but TDP-43 and FUS-negative neural inclusions are formed, which may be caused by impaired lysosomal degradation through the autophagy and endosome-lysosome pathways.

## Storage

**Storage:**  
Store at -80°C.  
**The product is shipped with ice packs. Upon receipt, store it immediately at -80°C**

**Storage Buffer:**  
PBS only, pH7.3

For technical support and original validation data for this product please contact:

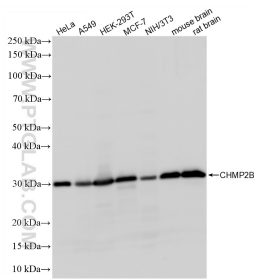
T: 4006900926

E: [Proteintech-CN@ptglab.com](mailto:Proteintech-CN@ptglab.com)

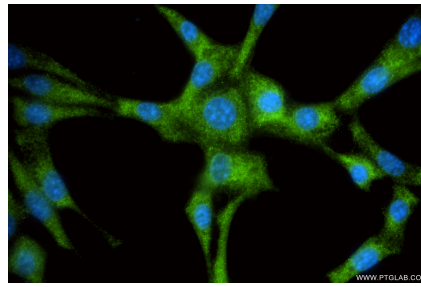
W: [ptgcn.com](http://ptgcn.com)

**This product is exclusively available under Proteintech Group brand and is not available to purchase from any other manufacturer.**

## Selected Validation Data



Various lysates were subjected to SDS PAGE followed by western blot with 87151-1-RR (CHMP2B antibody) at dilution of 1:20000 incubated at room temperature for 1.5 hours. This data was developed using the same antibody clone with 87151-1-PBS in a different storage buffer formulation.



Immunofluorescent analysis of (-20°C Ethanol) fixed NIH/3T3 cells using CHMP2B antibody (87151-1-RR, Clone: 252352F2) at dilution of 1:500 and CoraLite® 488-Conjugated Goat Anti-Rabbit IgG(H+L) (SA00013-2). This data was developed using the same antibody clone with 87151-1-PBS in a different storage buffer formulation.