

For Research Use Only

# CLEC2L Recombinant monoclonal antibody

Catalog Number: 87144-1-RR



## Basic Information

<b>Catalog Number:</b> 87144-1-RR	<b>GenBank Accession Number:</b> NM_001080511.2	<b>Purification Method:</b> Protein A purification
<b>Source:</b> Rabbit	<b>GeneID (NCBI):</b> 154790	<b>CloneNo.:</b> 252317D2
<b>Isotype:</b> IgG	<b>UNIPROT ID:</b> POC7M8	<b>Recommended Dilutions:</b> WB: 1:5000-1:50000
<b>Immunogen Catalog Number:</b> AG35450	<b>Full Name:</b> C-type lectin domain family 2, member L	
	<b>Calculated MW:</b> 24 kDa	
	<b>Observed MW:</b> 24 kDa	

## Applications

**Tested Applications:**  
WB, ELISA

**Species Specificity:**  
human, mouse, rat, pig

**Positive Controls:**  
WB: mouse cerebellum tissue, rat cerebellum tissue, mouse brain tissue, rat brain tissue, pig cerebellum tissue

## Background Information

C-type lectin domain family 2 member L (CLEC2L) is a membrane protein mainly expressed in brain tissue and probably has carbohydrate-binding activity. The CLEC2L-encoded C-type lectin-like receptors (CTLRs) are expressed as non-glycosylated, disulfide-linked homodimers at the cell surface, and designated as BAFL (brain-associated C-type lectin) (PMID: 23776472). The CLEC2L protein has 214 amino acids with a predicted molecular mass of 23.9 kDa. Under non-reducing conditions, FLAG-tagged CLEC2L proteins appeared with a molecular mass of ~55 kDa in immunoblots because of the occurrence of disulfide-linked homodimers (PMID: 23776472).

## Storage

**Storage:**  
Store at -20°C. Stable for one year after shipment.

**Storage Buffer:**  
PBS with 0.02% sodium azide and 50% glycerol, pH7.3

Aliquoting is unnecessary for -20°C storage

For technical support and original validation data for this product please contact:

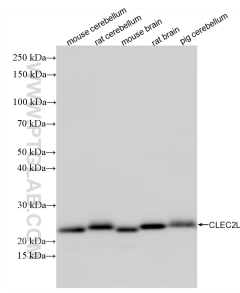
T: 4006900926

E: [Proteintech-CN@ptglab.com](mailto:Proteintech-CN@ptglab.com)

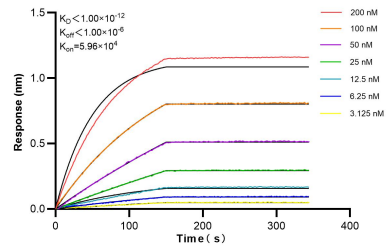
W: [ptgcn.com](http://ptgcn.com)

**This product is exclusively available under Proteintech Group brand and is not available to purchase from any other manufacturer.**

## Selected Validation Data



Various lysates were subjected to SDS PAGE followed by western blot with 87144-1-RR (CLEC2L antibody) at dilution of 1:20000 incubated at room temperature for 1.5 hours.



Biolayer interferometry (BLI) kinetic assays of 87144-1-RR against Human CLEC2L were performed. The affinity constant is below 1 pM.