

For Research Use Only

# SMAD5 Recombinant monoclonal antibody, PBS Only (Capture)

Catalog Number: 87142-2-PBS



## Basic Information

<b>Catalog Number:</b> 87142-2-PBS	<b>GenBank Accession Number:</b> BC009682	<b>Purification Method:</b> Protein A purification
<b>Source:</b> Rabbit	<b>GeneID (NCBI):</b> 4090	<b>CloneNo.:</b> 252329E1
<b>Isotype:</b> IgG	<b>UNIPROT ID:</b> Q99717	
<b>Immunogen Catalog Number:</b> AG2809	<b>Full Name:</b> SMAD family member 5	
	<b>Calculated MW:</b> 465 aa, 52 kDa	

## Applications

**Tested Applications:**  
Sandwich ELISA, Indirect ELISA

**Species Specificity:**  
human

## Background Information

### Storage

**Storage:**  
Store at -80°C.  
**The product is shipped with ice packs. Upon receipt, store it immediately at -80°C**

**Storage Buffer:**  
PBS only, pH7.3

For technical support and original validation data for this product please contact:

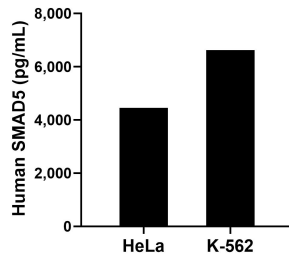
T: 4006900926

E: [Proteintech-CN@ptglab.com](mailto:Proteintech-CN@ptglab.com)

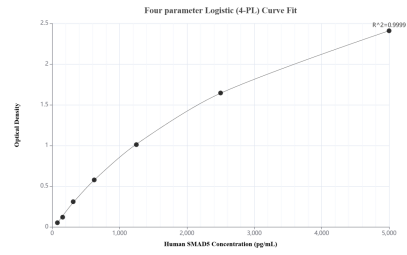
W: [ptgcn.com](http://ptgcn.com)

**This product is exclusively available under Proteintech Group brand and is not available to purchase from any other manufacturer.**

## Selected Validation Data



The mean SMAD5 concentration was determined to be 4,453.61 pg/mL in HeLa cell extract based on a 1.2 mg/mL extract load and 6,622.6 pg/mL in K-562 cell extract based on a 1.2 mg/mL extract load.



Sandwich ELISA standard curve of MP02940-1, Human SMAD5 Recombinant Matched Antibody Pair - PBS only. 87142-2-PBS was coated to a plate as the capture antibody and incubated with serial dilutions of standard Ag2809. 87142-1-PBS was HRP conjugated as the detection antibody. Range: 78.1-5000 pg/mL