

For Research Use Only

SMAD5 Recombinant monoclonal antibody, PBS Only (Detector)

Catalog Number: 87142-1-PBS



Basic Information

Catalog Number: 87142-1-PBS	GenBank Accession Number: BC009682	Purification Method: Protein A purification
Source: Rabbit	GeneID (NCBI): 4090	CloneNo.: 252329G2
Isotype: IgG	UNIPROT ID: Q99717	
Immunogen Catalog Number: AG2809	Full Name: SMAD family member 5	
	Calculated MW: 465 aa, 52 kDa	

Applications

Tested Applications:
Sandwich ELISA, Indirect ELISA

Species Specificity:
human

Background Information

Storage

Storage:
Store at -80°C.
The product is shipped with ice packs. Upon receipt, store it immediately at -80°C

Storage Buffer:
PBS only, pH7.3

For technical support and original validation data for this product please contact:

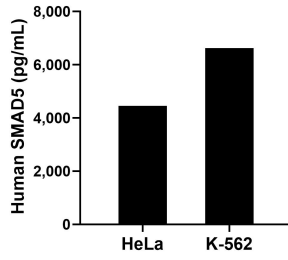
T: 4006900926

E: Proteintech-CN@ptglab.com

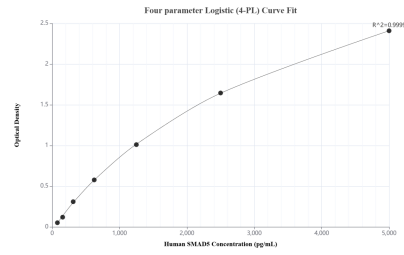
W: ptgcn.com

This product is exclusively available under Proteintech Group brand and is not available to purchase from any other manufacturer.

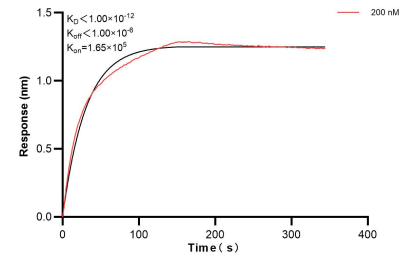
Selected Validation Data



The mean SMAD5 concentration was determined to be 4,453.61 pg/mL in HeLa cell extract based on a 1.2 mg/mL extract load and 6,622.6 pg/mL in K-562 cell extract based on a 1.2 mg/mL extract load.



Sandwich ELISA standard curve of MP02940-1, Human SMAD5 Recombinant Matched Antibody Pair - PBS only. 87142-2-PBS was coated to a plate as the capture antibody and incubated with serial dilutions of standard Ag2809. 87142-1-PBS was HRP conjugated as the detection antibody. Range: 78.1-5000 pg/mL.



Bi-layer interferometry (BLI) kinetic assay of 87142-1-PBS against Human SMAD5 was performed. The affinity constant is below 1 pM.