

For Research Use Only

# SPTLC1 Recombinant monoclonal antibody

Catalog Number: 87141-1-RR



## Basic Information

<b>Catalog Number:</b> 87141-1-RR	<b>GenBank Accession Number:</b> BC007085	<b>Purification Method:</b> Protein A purification
<b>Source:</b> Rabbit	<b>GeneID (NCBI):</b> 10558	<b>CloneNo.:</b> 252268G2
<b>Isotype:</b> IgG	<b>UNIPROT ID:</b> O15269	<b>Recommended Dilutions:</b> WB: 1:5000-1:50000
<b>Immunogen Catalog Number:</b> AG1162	<b>Full Name:</b> serine palmitoyltransferase, long chain base subunit 1	
	<b>Calculated MW:</b> 53 kDa	
	<b>Observed MW:</b> 53 kDa	

## Applications

<b>Tested Applications:</b> WB, ELISA	<b>Positive Controls:</b> WB : HeLa cells, HepG2 cells, Jurkat cells, HEK-293 cells
<b>Species Specificity:</b> human	

## Background Information

SPTLC1 is a subunit of serine palmitoyltransferase (SPT) which is the key enzyme in sphingolipid biosynthesis and is essential for embryogenesis and cell survival. Mutations in the SPTLC1 gene (C133W, C133Y, V144D, and G387A) were reported to be responsible for the development of an inherited sensory neuropathy (hereditary sensory neuropathy type I, HSN1) (PMID: 39959268). Pathogenic variants in SPTLC1 are causative for hereditary sensory and autonomic neuropathy, juvenile amyotrophic lateral sclerosis, macular telangiectasia type 2, or Charcot-Marie-Tooth disease (PMID: 31751474). Western blot analysis detected a specific band at ~53 kDa (PMID: 36197001).

## Storage

**Storage:**  
Store at -20°C. Stable for one year after shipment.  
**Storage Buffer:**  
PBS with 0.02% sodium azide and 50% glycerol, pH7.3  
Aliquoting is unnecessary for -20°C storage

For technical support and original validation data for this product please contact:

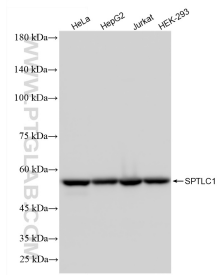
T: 4006900926

E: [Proteintech-CN@ptglab.com](mailto:Proteintech-CN@ptglab.com)

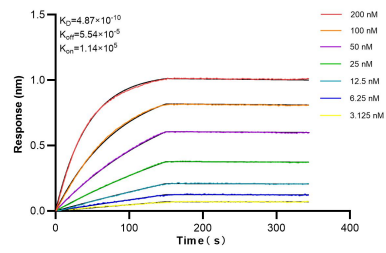
W: [ptgcn.com](http://ptgcn.com)

**This product is exclusively available under Proteintech Group brand and is not available to purchase from any other manufacturer.**

## Selected Validation Data



Various lysates were subjected to SDS PAGE followed by western blot with 87141-1-RR (SPTLC1 antibody) at dilution of 1:20000 incubated at room temperature for 1.5 hours.



Biolayer interferometry (BLI) kinetic assays of 87141-1-RR against Human SPTLC1 were performed. The affinity constant is 0.487 nM.