

For Research Use Only

MTFR1 Recombinant monoclonal antibody

Catalog Number: 87130-1-RR



Basic Information

| | | |
|---|--|--|
| Catalog Number: 87130-1-RR | GenBank Accession Number: BC036116 | Purification Method: Protein A purification |
| Source: Rabbit | GeneID (NCBI): 9650 | CloneNo.: 252234C10 |
| Isotype: IgG | UNIPROT ID: Q15390 | Recommended Dilutions: WB: 1:5000-1:50000 IF/ICC: 1:100-1:500 |
| Immunogen Catalog Number: AG10857 | Full Name: mitochondrial fission regulator 1 | |
| | Calculated MW: 333 aa, 37 kDa | |
| | Observed MW: 37 kDa | |

Applications

| | |
|--|--|
| Tested Applications: WB, IF/ICC, ELISA | Positive Controls: |
| Species Specificity: human | WB : A549 cells, NCI-H1299 cells, HepG2 cells, HCT 116 cells, SW480 cells, mouse testis tissue, rat testis tissue |
| | IF/ICC : A549 cells, |

Background Information

MTFR1, also known as CHPPR, is a mitochondria protein. It may play a role in mitochondrial aerobic respiration. It may also regulate mitochondrial organization and fission.

Storage

Storage:
Store at -20°C. Stable for one year after shipment.
Storage Buffer:
PBS with 0.02% sodium azide and 50% glycerol, pH7.3
Aliquoting is unnecessary for -20°C storage

For technical support and original validation data for this product please contact:

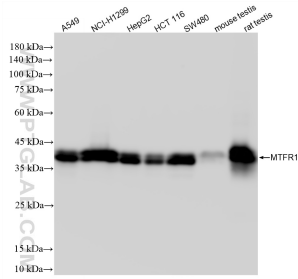
T: 4006900926

E: Proteintech-CN@ptglab.com

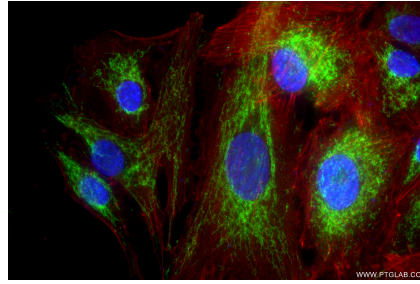
W: ptgcn.com

This product is exclusively available under Proteintech Group brand and is not available to purchase from any other manufacturer.

Selected Validation Data



Various lysates were subjected to SDS PAGE followed by western blot with 87130-1-RR (MTFR1 antibody) at dilution of 1:10000 incubated at room temperature for 1.5 hours.



Immunofluorescent analysis of (4% PFA) fixed A549 cells using MTFR1 antibody (87130-1-RR, Clone: 252234C10) at dilution of 1:500 and CoraLite® 488-Conjugated Goat Anti-Rabbit IgG(H+L) (SA00013-2), CL594-Phalloidin (red).