

For Research Use Only

# CUBN Recombinant monoclonal antibody, PBS Only (Detector)

Catalog Number:87126-1-PBS



## Basic Information

<b>Catalog Number:</b> 87126-1-PBS	<b>GenBank Accession Number:</b> NM_001081.4	<b>Purification Method:</b> Protein A purification
<b>Source:</b> Rabbit	<b>GeneID (NCBI):</b> 8029	<b>CloneNo.:</b> 25222487
<b>Isotype:</b> IgG	<b>UNIPROT ID:</b> O60494	
<b>Immunogen Catalog Number:</b> EG6589	<b>Full Name:</b> cubilin (intrinsic factor-cobalamin receptor)	
	<b>Calculated MW:</b> 399 kDa	

## Applications

**Tested Applications:**  
Cytometric bead array, Indirect ELISA

**Species Specificity:**  
human

## Background Information

### Storage

**Storage:**  
Store at -80°C.  
**The product is shipped with ice packs. Upon receipt, store it immediately at -80°C**

**Storage Buffer:**  
PBS only, pH7.3

For technical support and original validation data for this product please contact:

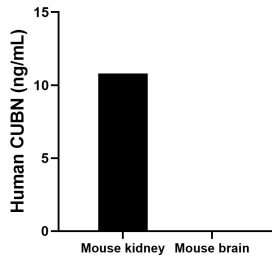
T: 4006900926

E: [Proteintech-CN@ptglab.com](mailto:Proteintech-CN@ptglab.com)

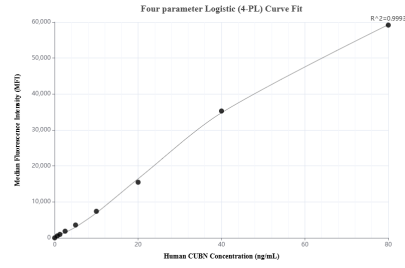
W: [ptgcn.com](http://ptgcn.com)

**This product is exclusively available under Proteintech Group brand and is not available to purchase from any other manufacturer.**

## Selected Validation Data



The mean CUBN concentration was determined to be 10.8 ng/mL in Mouse kidney tissue extract based on a 8.4 mg/mL extract load. Mouse brain tissue extract were served as a negative control.



Cytometric bead array standard curve of MP02876-1, CUBN Recombinant Matched Antibody Pair, PBS Only. Capture antibody: 87126-2-PBS. Detection antibody: 87126-1-PBS. Standard: Eg6589. Range: 0.625-80 ng/mL.