

For Research Use Only

# GIPR Recombinant monoclonal antibody

Catalog Number: 87123-1-RR



## Basic Information

<b>Catalog Number:</b> 87123-1-RR	<b>GenBank Accession Number:</b> NM_000164.3	<b>Purification Method:</b> Protein A purification
<b>Source:</b> Rabbit	<b>GeneID (NCBI):</b> 2696	<b>CloneNo.:</b> 252192B7
<b>Isotype:</b> IgG	<b>UNIPROT ID:</b> P48546	<b>Recommended Dilutions:</b> WB: 1:1000-1:4000
<b>Immunogen Catalog Number:</b> EG6484	<b>Full Name:</b> gastric inhibitory polypeptide receptor	
	<b>Calculated MW:</b> 53 kDa	
	<b>Observed MW:</b> 53 kDa	

## Applications

<b>Tested Applications:</b> WB, ELISA	<b>Positive Controls:</b> WB : HT-1080 cells, rat heart tissue, Recombinant protein
<b>Species Specificity:</b> human, rat	

## Background Information

GIPR, or Gastric Inhibitory Polypeptide Receptor, plays a crucial role in glucose metabolism and insulin secretion. It is a G protein-coupled receptor (GPCR). It belongs to the B1 class of this receptor family, which is involved in various physiological processes including fat generation, pancreatic beta-cell proliferation, and insulin release.

## Storage

**Storage:**  
Store at -20°C. Stable for one year after shipment.  
**Storage Buffer:**  
PBS with 0.02% sodium azide and 50% glycerol, pH7.3  
Aliquoting is unnecessary for -20°C storage

For technical support and original validation data for this product please contact:

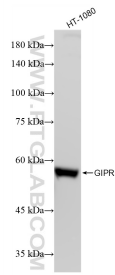
T: 4006900926

E: Proteintech-CN@ptglab.com

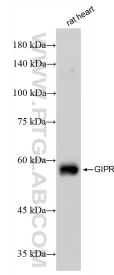
W: ptgcn.com

This product is exclusively available under Proteintech Group brand and is not available to purchase from any other manufacturer.

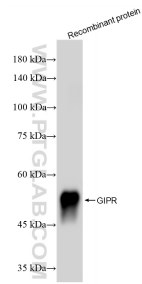
## Selected Validation Data



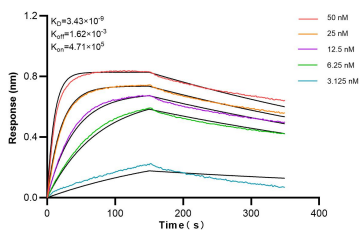
HT-1080 cells lysates were subjected to SDS PAGE followed by western blot with 87123-1-RR (GIPR antibody) at dilution of 1:2000 incubated at room temperature for 1.5 hours.



rat heart tissue lysates were subjected to SDS PAGE followed by western blot with 87123-1-RR (GIPR antibody) at dilution of 1:2000 incubated at room temperature for 1.5 hours.



Various lysates were subjected to SDS PAGE followed by western blot with 87123-1-RR (GIPR antibody) at dilution of 1:2000 incubated at room temperature for 1.5 hours.



Biolayer interferometry (BLI) kinetic assays of 87123-1-RR against Human GIPR were performed. The affinity constant is 3.43 nM.