

For Research Use Only

# CRHR1 Recombinant monoclonal antibody, PBS Only

Catalog Number: 87114-1-PBS



## Basic Information

Catalog Number:

87114-1-PBS

Source:

Rabbit

Isotype:

IgG

GenBank Accession Number:

NM\_004382

GeneID (NCBI):

1394

UNIPROT ID:

P34998

Full Name:

corticotropin releasing hormone receptor 1

Calculated MW:

48 kDa

Observed MW:

68 kDa

Purification Method:

Protein A purification

CloneNo.:

251134H2

## Applications

Tested Applications:

WB, Indirect ELISA

Species Specificity:

human, mouse, rat

## Background Information

Corticotropin-releasing hormone (CRH, also known as Corticotropin-releasing factor, CRF) is a 41 amino acid peptide hormone and a key regulator of the stress response. CRH and the related urocortin peptides (UCN, UCN2 and UCN3) mediate their actions through two mammalian receptor subtypes, CRHR1 and CRHR2 (PMID: 23863939). CRHR1 (also known as CRFR1) exhibits high affinity towards CRH and UCN but low affinity towards UCN2 and no affinity towards UCN3 (PMID: 22684850). The activity of this receptor is mediated by G proteins which activate adenylyl cyclase. Widely distributed throughout the brain, CRHR1 critically controls behavioral adaptation to stress and is causally linked to emotional disorders (PMID: 21885734). Alternative splicing results in multiple transcript variants encoding distinct isoforms of CRHR1. This antibody raised against a synthesized peptide corresponding to amino acid residues 148-165 of isoform CRF-R1 can only recognize isoform CRF-R1.

## Storage

Storage:

Store at -80°C.

**The product is shipped with ice packs. Upon receipt, store it immediately at -80°C**

Storage Buffer:

PBS only, pH7.3

For technical support and original validation data for this product please contact:

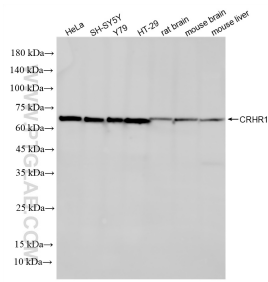
T: 4006900926

E: [Proteintech-CN@ptglab.com](mailto:Proteintech-CN@ptglab.com)

W: [ptgcn.com](http://ptgcn.com)

**This product is exclusively available under Proteintech Group brand and is not available to purchase from any other manufacturer.**

## Selected Validation Data



Various lysates were subjected to SDS PAGE followed by western blot with 87114-1-RR (CRHR1 antibody) at dilution of 1:10000 incubated at room temperature for 1.5 hours. This data was developed using the same antibody clone with 87114-1-PBS in a different storage buffer formulation.