

For Research Use Only

# MAML1 Recombinant monoclonal antibody

Catalog Number: 87111-1-RR



## Basic Information

Catalog Number:

87111-1-RR

Source:

Rabbit

Isotype:

IgG

GenBank Accession Number:

NM\_014757

GeneID (NCBI):

9794

UNIPROT ID:

Q92585

Full Name:

mastermind-like 1 (Drosophila)

Calculated MW:

108 kDa

Observed MW:

108-120 kDa

Purification Method:

Protein A purification

CloneNo.:

252237E6

Recommended Dilutions:

WB: 1:2000-1:10000

## Applications

Tested Applications:

WB, ELISA

Species Specificity:

human, mouse

Positive Controls:

WB : HeLa cells, HEK-293 cells, MOLT-4 cells, Jurkat cells, NIH/3T3 cells

## Background Information

MAML1, also named as KIAA0200 and Mam-1, belongs to the mastermind family. It acts as a transcriptional coactivator for NOTCH proteins. MAML1 has been shown to amplify NOTCH-induced transcription of HES1. It enhances phosphorylation and proteolytic turnover of the NOTCH intracellular domain in the nucleus through interaction with CDK8. MAML1 binds to CREBBP/CBP which promotes nucleosome acetylation at NOTCH enhancers and activates transcription. Induces phosphorylation and localization of CREBBP to nuclear foci. It plays a role in hematopoietic development by regulating NOTCH-mediated lymphoid cell fate decisions. This antibody is specific to MAML1. The calculated molecular weight of MAML1 is 108 kDa, but modified MAML1 is about 120 kDa.

## Storage

Storage:

Store at -20°C. Stable for one year after shipment.

Storage Buffer:

PBS with 0.02% sodium azide and 50% glycerol, pH7.3

Aliquoting is unnecessary for -20°C storage

For technical support and original validation data for this product please contact:

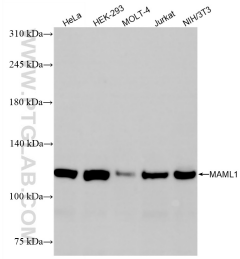
T: 4006900926

E: [Proteintech-CN@ptglab.com](mailto:Proteintech-CN@ptglab.com)

W: [ptgcn.com](http://ptgcn.com)

This product is exclusively available under Proteintech Group brand and is not available to purchase from any other manufacturer.

## Selected Validation Data



Various lysates were subjected to SDS PAGE followed by western blot with 87111-1-RR (MAML1 antibody) at dilution of 1:5000 incubated at room temperature for 1.5 hours.