

For Research Use Only

Complement Factor I Recombinant monoclonal antibody

Catalog Number:87109-1-RR



Basic Information

Catalog Number:

87109-1-RR

Source:

Rabbit

Isotype:

IgG

Immunogen Catalog Number:

EG3066

GenBank Accession Number:

NM_000204.5

GeneID (NCBI):

3426

UNIPROT ID:

P05156

Full Name:

complement factor I

Calculated MW:

66 kDa

Observed MW:

75-80 kDa

Purification Method:

Protein A purification

CloneNo.:

252199E11

Recommended Dilutions:

WB: 1:1000-1:4000

Applications

Tested Applications:

WB, ELISA

Species Specificity:

human

Positive Controls:

WB : HepG2 cells, HuH-7 cells, U-251 cells

Background Information

Complement Factor I (CFI) protein is a key plasma serine protease, which is mainly synthesized in the liver, with a molecular weight of about 75-80 kDa, and circulates in the blood in the form of heterodimers of heavy chain (51 kDa)- light chain (37 kDa) disulfide bonds.

Storage

Storage:

Store at -20°C. Stable for one year after shipment.

Storage Buffer:

PBS with 0.02% sodium azide and 50% glycerol, pH7.3

Aliquoting is unnecessary for -20°C storage

For technical support and original validation data for this product please contact:

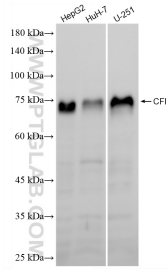
T: 4006900926

E: Proteintech-CN@ptglab.com

W: ptgcn.com

This product is exclusively available under Proteintech Group brand and is not available to purchase from any other manufacturer.

Selected Validation Data



Various lysates were subjected to SDS PAGE followed by western blot with 87109-1-RR (CFI antibody) at dilution of 1:2000 incubated at room temperature for 1.5 hours.