

For Research Use Only

Complement Factor I Recombinant monoclonal antibody, PBS Only

Catalog Number:87109-1-PBS



Basic Information

Catalog Number: 87109-1-PBS	GenBank Accession Number: NM_000204.5	Purification Method: Protein A purification
Source: Rabbit	GeneID (NCBI): 3426	CloneNo.: 252199E11
Isotype: IgG	UNIPROT ID: P05156	
Immunogen Catalog Number: EG3066	Full Name: complement factor I	
	Calculated MW: 66 kDa	
	Observed MW: 75-80 kDa	

Applications

Tested Applications:
WB, Indirect ELISA

Species Specificity:
human

Background Information

Complement Factor I (CFI) protein is a key plasma serine protease, which is mainly synthesized in the liver, with a molecular weight of about 75-80 kDa, and circulates in the blood in the form of heterodimers of heavy chain (51 kDa)- light chain (37 kDa) disulfide bonds.

Storage

Storage:
Store at -80°C.
The product is shipped with ice packs. Upon receipt, store it immediately at -80°C

Storage Buffer:
PBS only, pH7.3

For technical support and original validation data for this product please contact:

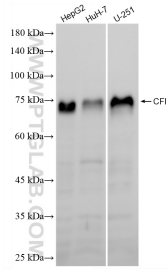
T: 4006900926

E: Proteintech-CN@ptglab.com

W: ptgcn.com

This product is exclusively available under Proteintech Group brand and is not available to purchase from any other manufacturer.

Selected Validation Data



Various lysates were subjected to SDS PAGE followed by western blot with 87109-1-RR (CFI antibody) at dilution of 1:2000 incubated at room temperature for 1.5 hours. This data was developed using the same antibody clone with 87109-1-PBS in a different storage buffer formulation.