

For Research Use Only

# MUC13 Recombinant monoclonal antibody, PBS Only (Detector)

Catalog Number: 87107-1-PBS



## Basic Information

<b>Catalog Number:</b> 87107-1-PBS	<b>GenBank Accession Number:</b> NM_033049.4	<b>Purification Method:</b> Protein A purification
<b>Source:</b> Rabbit	<b>GeneID (NCBI):</b> 56667	<b>CloneNo.:</b> 252211G2
<b>Isotype:</b> IgG	<b>UNIPROT ID:</b> Q9H3R2	
<b>Immunogen Catalog Number:</b> EG6586	<b>Full Name:</b> mucin 13, cell surface associated	
	<b>Calculated MW:</b> 55 kDa	

## Applications

**Tested Applications:**  
Cytometric bead array, Sandwich ELISA, Indirect ELISA

**Species Specificity:**  
human

## Background Information

### Storage

**Storage:**  
Store at -80°C.  
**The product is shipped with ice packs. Upon receipt, store it immediately at -80°C**

**Storage Buffer:**  
PBS only, pH7.3

For technical support and original validation data for this product please contact:

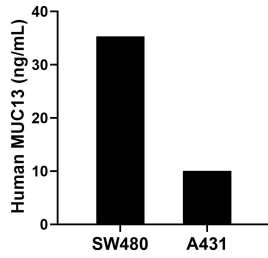
T: 4006900926

E: [Proteintech-CN@ptglab.com](mailto:Proteintech-CN@ptglab.com)

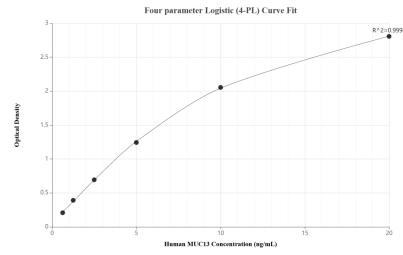
W: [ptgcn.com](http://ptgcn.com)

**This product is exclusively available under Proteintech Group brand and is not available to purchase from any other manufacturer.**

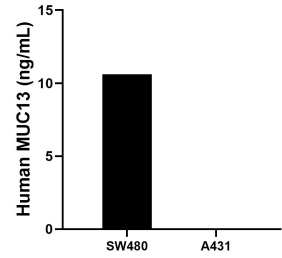
## Selected Validation Data



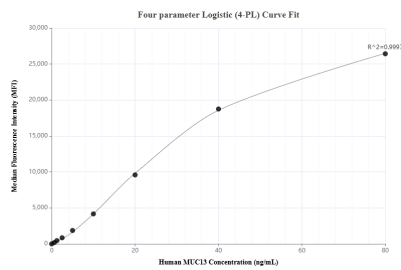
The mean MUC13 concentration was determined to be 35.32 ng/mL in SW480 cell extract based on a 1.20 mg/mL extract load and 10.04 ng/mL in A431 cell extract based on a 1.20 mg/mL extract load.



Sandwich ELISA standard curve of MP02867-2, Human MUC13 Recombinant Matched Antibody Pair - PBS only. 87107-3-PBS was coated to a plate as the capture antibody and incubated with serial dilutions of standard Eg6586. 87107-1-PBS was HRP conjugated as the detection antibody. Range: 0.625-20 ng/mL.



The mean MUC13 concentration was determined to be 10.6 ng/mL in SW480 cell extract based on a 1.2 mg/mL extract load. A431 cell extract were served as a negative control.



Cytometric bead array standard curve of MP02867-1, MUC13 Recombinant Matched Antibody Pair, PBS Only. Capture antibody: 87107-2-PBS. Detection antibody: 87107-1-PBS. Standard: Eg6586. Range: 0.625-80 ng/mL.