

For Research Use Only

Phospho-TAU (Thr212/Ser214) Recombinant monoclonal antibody, PBS Only

Catalog Number: 87103-1-PBS



Basic Information

Catalog Number:

87103-1-PBS

Source:

Rabbit

Isotype:

IgG

GenBank Accession Number:

BC000558

GeneID (NCBI):

4137

UNIPROT ID:

P10636

Full Name:

microtubule-associated protein tau

Calculated MW:

37-46, 79-81 kDa

Observed MW:

45-60 kDa

Purification Method:

Protein A purification

CloneNo.:

252171D2

Applications

Tested Applications:

WB, Indirect ELISA

Species Specificity:

human, mouse

Background Information

The double phosphorylation of Tau at Thr212/Ser214 is a hallmark of Alzheimer's disease neurofibrillary tangles. This modification is critical for inducing a pathological conformation that promotes Tau aggregation into toxic filaments while impairing its normal microtubule-stabilizing function.

Storage

Storage:

Store at -80°C.

The product is shipped with ice packs. Upon receipt, store it immediately at -80°C

Storage Buffer:

PBS only, pH7.3

For technical support and original validation data for this product please contact:

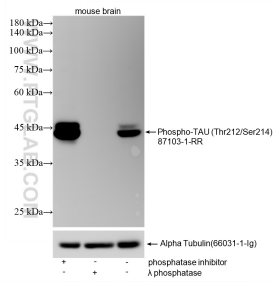
T: 4006900926

E: Proteintech-CN@ptglab.com

W: ptgcn.com

This product is exclusively available under Proteintech Group brand and is not available to purchase from any other manufacturer.

Selected Validation Data



Non-treated mouse brain tissue, phosphatase inhibitor treated mouse brain tissue and λ phosphatase treated mouse brain tissue were subjected to SDS PAGE followed by western blot with 87103-1-RR (Phospho-TAU (Thr212/Ser214) antibody at dilution of 1:2000 incubated at room temperature for 1.5 hours. The membrane was stripped and re-blotted with Alpha Tubulin (66031-1-ig) antibody as a loading control. This data was developed using the same antibody clone

