

For Research Use Only

Apolipoprotein CIII Recombinant monoclonal antibody, PBS Only (Capture)

Catalog Number: 87100-4-PBS



Basic Information

Catalog Number: 87100-4-PBS	GenBank Accession Number: NM_000040	Purification Method: Protein A purification
Source: Rabbit	GeneID (NCBI): 345	CloneNo.: 252153A1
Isotype: IgG	UNIPROT ID: P02656	
Immunogen Catalog Number: EG3387	Full Name: apolipoprotein C-III	
	Calculated MW: 11 kDa	

Applications

Tested Applications:
Sandwich ELISA, Indirect ELISA

Species Specificity:
human

Background Information

Storage

Storage:
Store at -80°C.
The product is shipped with ice packs. Upon receipt, store it immediately at -80°C

Storage Buffer:
PBS only, pH7.3

For technical support and original validation data for this product please contact:

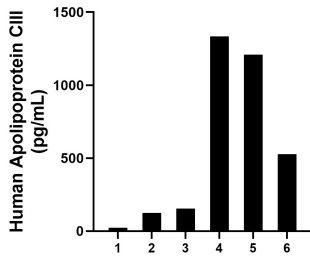
T: 4006900926

E: Proteintech-CN@ptglab.com

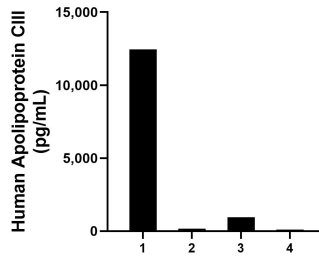
W: ptgcn.com

This product is exclusively available under Proteintech Group brand and is not available to purchase from any other manufacturer.

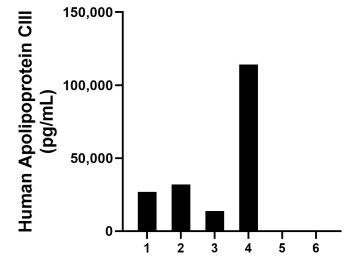
Selected Validation Data



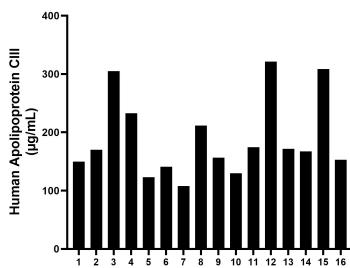
Saliva of six individual healthy human donors was measured. The human Apolipoprotein CIII concentration of detected samples was determined to be 561.9 pg/mL with a range of 23.1 - 1,334.8 pg/mL.



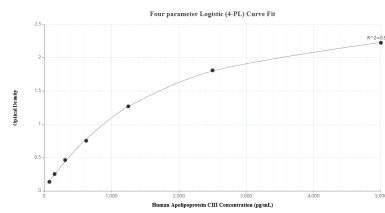
Urine of four individual healthy human donors was measured. The human Apolipoprotein CIII concentration of detected samples was determined to be 3,416.1 pg/mL with a range of 110.3 - 12,438.9 pg/mL.



Human milk of six individual healthy human donors was measured. The human Apolipoprotein CIII concentration of detected samples was determined to be 31,160.2 pg/mL with a range of 16.6 - 114,116.5 pg/mL.



Plasma of sixteen individual healthy human donors was measured. The human Apolipoprotein CIII concentration of detected samples was determined to be 188.92 µg/mL with a range of 107.97 - 321.24 µg/mL.



Sandwich ELISA standard curve of MP02866-2, Human Apolipoprotein CIII Recombinant Matched Antibody Pair - PBS only. 87100-4-PBS was coated to a plate as the capture antibody and incubated with serial dilutions of standard Eg3387. 87100-2-PBS was HRP conjugated as the detection antibody. Range: 78.1-5000 pg/mL.