

For Research Use Only

# CD21 Recombinant monoclonal antibody, PBS Only (Capture)

Catalog Number: 87097-3-PBS



## Basic Information

Catalog Number:

87097-3-PBS

Source:

Rabbit

Isotype:

IgG

Immunogen Catalog Number:

EG2980

GenBank Accession Number:

NM\_001877.5

GeneID (NCBI):

1380

ENSEMBL Gene ID:

ENSG00000117322

UNIPROT ID:

P20023-1

Full Name:

complement component (3d/Epstein Barr virus) receptor 2

Calculated MW:

113 kDa

Purification Method:

Protein A purification

CloneNo.:

252181G8

## Applications

Tested Applications:

Cytometric bead array, Sandwich ELISA, Indirect ELISA

Species Specificity:

human

## Background Information

### Storage

Storage:

Store at -80°C.

The product is shipped with ice packs. Upon receipt, store it immediately at -80°C

Storage Buffer:

PBS only, pH7.3

For technical support and original validation data for this product please contact:

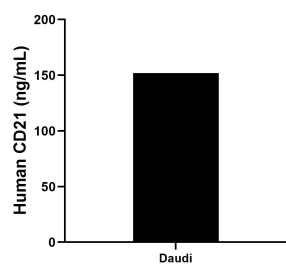
T: 4006900926

E: [Proteintech-CN@ptglab.com](mailto:Proteintech-CN@ptglab.com)

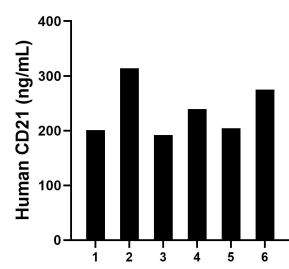
W: [ptgcn.com](http://ptgcn.com)

This product is exclusively available under Proteintech Group brand and is not available to purchase from any other manufacturer.

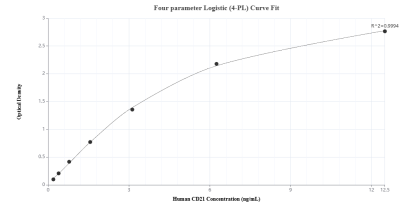
Selected Validation Data



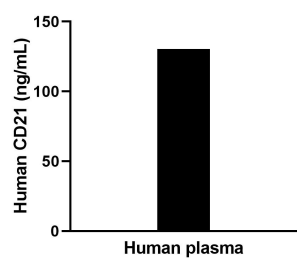
The mean CD21 concentration was determined to be 152.00 ng/mL in Daudi cell extract based on a 1.8 mg/mL extract load.



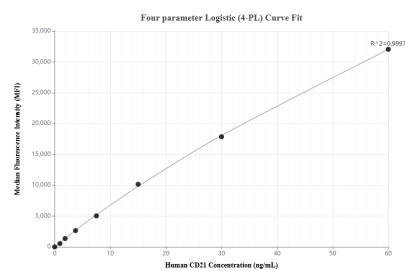
Plasma of six individual healthy human donors was measured. The human CD21 concentration of detected samples was determined to be 7.29 ng/mL with a range of 3.90 - 9.46 ng/mL.



Sandwich ELISA standard curve of MP02864-2, Human CD21 Recombinant Matched Antibody Pair - PBS only. 87097-3-PBS was coated to a plate as the capture antibody and incubated with serial dilutions of standard Eg2980. 87097-1-PBS was HRP conjugated as the detection antibody. Range: 0.195-12.5 ng/mL



The mean CD21 concentration was determined to be 131.8 ng/mL in human plasma.



Cytometric bead array standard curve of MP02864-1, CD21 Recombinant Matched Antibody Pair, PBS Only. Capture antibody: 87097-3-PBS. Detection antibody: 87097-2-PBS. Standard: Eg2980. Range: 0.938-60 ng/mL.