

For Research Use Only

CD21 Recombinant monoclonal antibody, PBS Only (Detector)

Catalog Number: 87097-1-PBS



Basic Information

Catalog Number:	87097-1-PBS	GenBank Accession Number:	NM_001877.5	Purification Method:	Protein A purification
Source:	Rabbit	GeneID (NCBI):	1380	CloneNo.:	252181F1
Isotype:	IgG	ENSEMBL Gene ID:	ENSG00000117322		
Immunogen Catalog Number:	EG2980	UNIPROT ID:	P20023-1		
		Full Name:	complement component (3d/Epstein Barr virus) receptor 2		
		Calculated MW:	113 kDa		
		Observed MW:	150 kDa		

Applications

Tested Applications:
WB, Sandwich ELISA, Indirect ELISA

Species Specificity:
human

Background Information

CD21, also known as complement receptor type 2 (CR2), complement C3d receptor, and Epstein-Barr virus receptor, is a transmembrane protein that contains a small cytoplasmic domain, a transmembrane region and an extracellular domain consisting of 15 tandem short consensus repeat sequences (PMID: 6230668; 2551147). It is expressed on B cells, follicular dendritic cells, thymocytes and a subset of peripheral T cells (PMID: 26119182). CD21 binds complement fragments C3d, C3dg and iC3b and acts as a receptor for the Epstein-Barr virus (PMID: 7753047). On B cells, together with CD19 and CD81, CD21 forms a complex that functions as a co-receptor to the BCR (PMID: 7542009). It is involved in B cells activation and functions.

Storage

Storage:
Store at -80°C.
The product is shipped with ice packs. Upon receipt, store it immediately at -80°C

Storage Buffer:
PBS only, pH7.3

For technical support and original validation data for this product please contact:

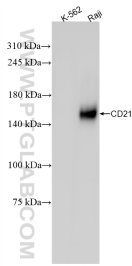
T: 4006900926

E: Proteintech-CN@ptglab.com

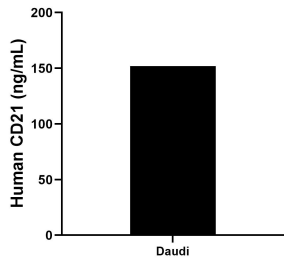
W: ptgcn.com

This product is exclusively available under Proteintech Group brand and is not available to purchase from any other manufacturer.

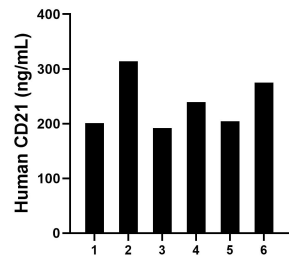
Selected Validation Data



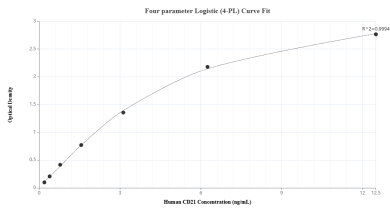
Raji cells were subjected to SDS PAGE followed by western blot with 87097-1-RR (CR2 antibody) at dilution of 1:2000 incubated at room temperature for 1.5 hours. This data was developed using the same antibody clone with 87097-1-PBS in a different storage buffer formulation.



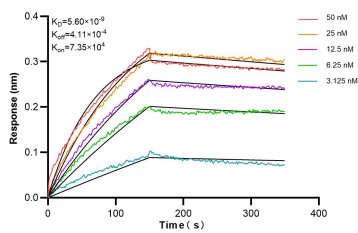
The mean CD21 concentration was determined to be 152.00 ng/mL in Daudi cell extract based on a 1.8 mg/mL extract load.



Plasma of six individual healthy human donors was measured. The human CD21 concentration of detected samples was determined to be 7.29 ng/mL with a range of 3.90 - 9.46 ng/mL.



Sandwich ELISA standard curve of MP02864-2, Human CD21 Recombinant Matched Antibody Pair - PBS only. 87097-3-PBS was coated to a plate as the capture antibody and incubated with serial dilutions of standard Eg2980. 87097-1-PBS was HRP conjugated as the detection antibody. Range: 0.195-12.5 ng/mL



Biolayer interferometry (BLI) kinetic assays of 87097-1-RR against Human CD21 were performed. The affinity constant is 5.60 nM.