

For Research Use Only

# GPR37 Recombinant monoclonal antibody

Catalog Number:87095-1-RR



## Basic Information

<b>Catalog Number:</b> 87095-1-RR	<b>GenBank Accession Number:</b> NM_005302.5	<b>Purification Method:</b> Protein A purification
<b>Source:</b> Rabbit	<b>GeneID (NCBI):</b> 2861	<b>CloneNo.:</b> 252205H3
<b>Isotype:</b> IgG	<b>UNIPROT ID:</b> O15354	<b>Recommended Dilutions:</b> WB: 1:1000-1:6000
<b>Immunogen Catalog Number:</b> EG5426	<b>Full Name:</b> G protein-coupled receptor 37 (endothelin receptor type B-like)	
	<b>Calculated MW:</b> 67 kDa	
	<b>Observed MW:</b> 67 kDa	

## Applications

<b>Tested Applications:</b> WB, ELISA	<b>Positive Controls:</b> WB : K-562 cells,
<b>Species Specificity:</b> human	

## Background Information

The orphan G protein-coupled receptor GPR37, also known as PAELR (parkin-associated endothelin receptor-like receptor) or ETBR-LP-1 (endothelin B receptor-like protein 1), is a 613 aa, multi-pass membrane protein predominantly expressed in the brain. It is a substrate of parkin (PARK2). When overexpressed in cells, GPR37 tends to become insoluble, unfolded, and ubiquitinated in vivo. Accumulation of the unfolded protein may lead to dopaminergic neuronal death in juvenile Parkinson disease (JPD). This antibody recognizes endogenous GPR37, which migrates as an approximately 50-55 kDa band in SDS-PAGE (PMID:17519329).

## Storage

**Storage:**  
Store at -20°C. Stable for one year after shipment.  
**Storage Buffer:**  
PBS with 0.02% sodium azide and 50% glycerol, pH7.3  
Aliquoting is unnecessary for -20°C storage

For technical support and original validation data for this product please contact:

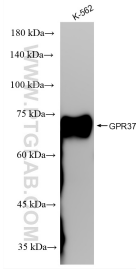
T: 4006900926

E: Proteintech-CN@ptglab.com

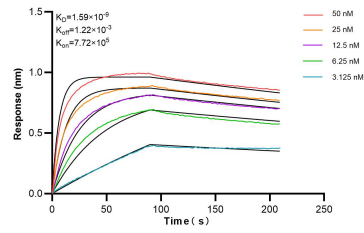
W: ptgcn.com

**This product is exclusively available under Proteintech Group brand and is not available to purchase from any other manufacturer.**

## Selected Validation Data



K-562 cells lysates were subjected to SDS PAGE followed by western blot with 87095-1-RR (GPR37 antibody) at dilution of 1:3000 incubated at room temperature for 1.5 hours.



Biolayer interferometry (BLI) kinetic assays of 87095-1-RR against Human GPR37 were performed. The affinity constant is 1.59 nM.