

For Research Use Only

# GPR37 Recombinant monoclonal antibody, PBS Only

Catalog Number:87095-1-PBS



## Basic Information

<b>Catalog Number:</b> 87095-1-PBS	<b>GenBank Accession Number:</b> NM_005302.5	<b>Purification Method:</b> Protein A purification
<b>Source:</b> Rabbit	<b>GeneID (NCBI):</b> 2861	<b>CloneNo.:</b> 252205H3
<b>Isotype:</b> IgG	<b>UNIPROT ID:</b> O15354	
<b>Immunogen Catalog Number:</b> EG5426	<b>Full Name:</b> G protein-coupled receptor 37 (endothelin receptor type B-like)	
	<b>Calculated MW:</b> 67 kDa	
	<b>Observed MW:</b> 67 kDa	

## Applications

**Tested Applications:**  
WB, Indirect ELISA

**Species Specificity:**  
human

## Background Information

The orphan G protein-coupled receptor GPR37, also known as PAELR (parkin-associated endothelin receptor-like receptor) or ETBR-LP-1 (endothelin B receptor-like protein 1), is a 613 aa, multi-pass membrane protein predominantly expressed in the brain. It is a substrate of parkin (PARK2). When overexpressed in cells, GPR37 tends to become insoluble, unfolded, and ubiquitinated in vivo. Accumulation of the unfolded protein may lead to dopaminergic neuronal death in juvenile Parkinson disease (JPD). This antibody recognizes endogenous GPR37, which migrates as an approximately 50-55 kDa band in SDS-PAGE (PMID:17519329).

## Storage

**Storage:**  
Store at -80°C.  
**The product is shipped with ice packs. Upon receipt, store it immediately at -80°C**

**Storage Buffer:**  
PBS only, pH7.3

For technical support and original validation data for this product please contact:

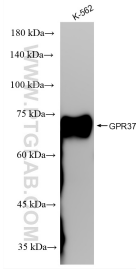
T: 4006900926

E: Proteintech-CN@ptglab.com

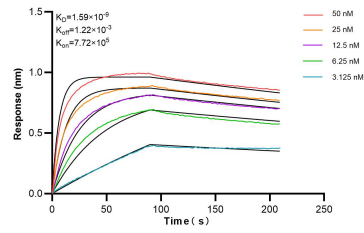
W: ptgcn.com

**This product is exclusively available under Proteintech Group brand and is not available to purchase from any other manufacturer.**

## Selected Validation Data



K-562 cells lysates were subjected to SDS PAGE followed by western blot with 87095-1-RR (GPR37 antibody) at dilution of 1:3000 incubated at room temperature for 1.5 hours. This data was developed using the same antibody clone with 87095-1-PBS in a different storage buffer formulation.



Bilayer interferometry (BLI) kinetic assays of 87095-1-RR against Human GPR37 were performed. The affinity constant is 1.59 nM.